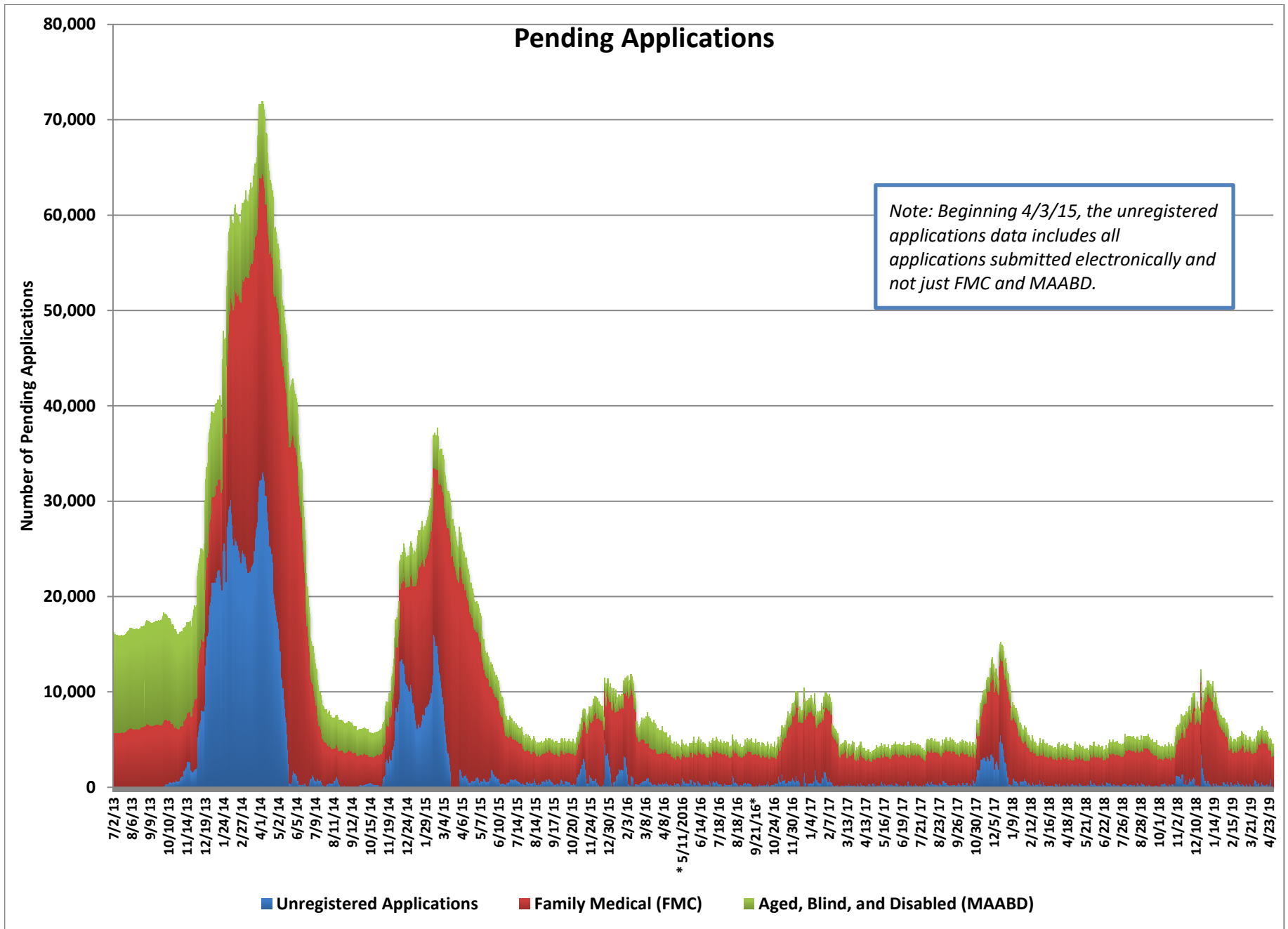


Medicaid Chart Pack

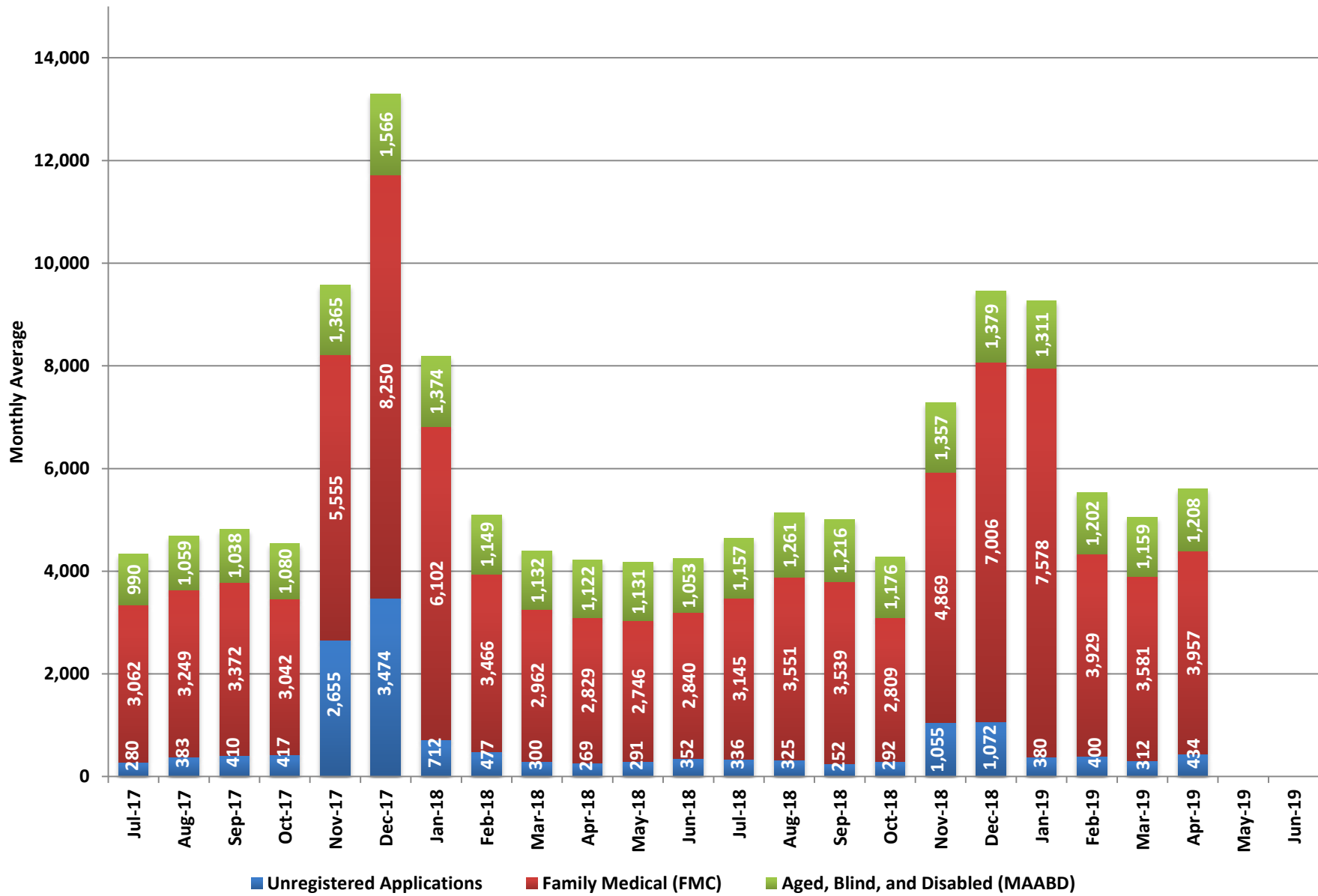
May 2019



Pending Applications

| Date | Unregistered Applications | Family Medical (FMC) | | | Aged, Blind, and Disabled (MAABD) | | | | Total Medicaid Pending Applications |
|---------|---------------------------|----------------------|-------------------|--------------------|-----------------------------------|--------------------|-------------------|--------------------|-------------------------------------|
| | | Pending <= 45 Days | Pending > 45 Days | Total Applications | Pending <= 45 Days | Pending 46-90 Days | Pending > 90 Days | Total Applications | |
| 4/1/19 | 972 | 3,314 | 25 | 3,339 | 1,111 | 127 | 64 | 1,302 | 5,613 |
| 4/2/19 | 767 | 3,650 | 28 | 3,678 | 1,133 | 101 | 62 | 1,296 | 5,741 |
| 4/3/19 | 612 | 3,948 | 25 | 3,973 | 1,144 | 98 | 58 | 1,300 | 5,885 |
| 4/4/19 | 340 | 4,126 | 20 | 4,146 | 1,138 | 93 | 58 | 1,289 | 5,775 |
| 4/5/19 | 565 | 4,147 | 20 | 4,167 | 1,116 | 82 | 59 | 1,257 | 5,989 |
| 4/8/19 | 478 | 4,353 | 24 | 4,377 | 1,111 | 97 | 61 | 1,269 | 6,124 |
| 4/9/19 | 377 | 4,517 | 23 | 4,540 | 1,099 | 91 | 59 | 1,249 | 6,166 |
| 4/10/19 | 103 | 4,551 | 18 | 4,569 | 1,097 | 87 | 55 | 1,239 | 5,911 |
| 4/11/19 | 151 | 4,499 | 18 | 4,517 | 1,071 | 78 | 58 | 1,207 | 5,875 |
| 4/12/19 | 576 | 4,326 | 18 | 4,344 | 1,072 | 75 | 58 | 1,205 | 6,125 |
| 4/15/19 | 353 | 4,416 | 21 | 4,437 | 1,096 | 82 | 59 | 1,237 | 6,027 |
| 4/16/19 | 253 | 4,395 | 23 | 4,418 | 1,073 | 94 | 53 | 1,220 | 5,891 |
| 4/17/19 | 183 | 4,373 | 23 | 4,396 | 1,057 | 91 | 52 | 1,200 | 5,779 |
| 4/18/19 | 172 | 4,287 | 25 | 4,312 | 1,053 | 87 | 50 | 1,190 | 5,674 |
| 4/19/19 | 256 | 4,166 | 23 | 4,189 | 1,054 | 96 | 51 | 1,201 | 5,646 |
| 4/22/19 | 439 | 3,944 | 28 | 3,972 | 1,016 | 109 | 48 | 1,173 | 5,584 |
| 4/23/19 | 360 | 3,573 | 24 | 3,597 | 1,006 | 103 | 50 | 1,159 | 5,116 |
| 4/24/19 | 132 | 3,343 | 26 | 3,369 | 959 | 99 | 49 | 1,107 | 4,608 |
| 4/25/19 | 275 | 3,173 | 25 | 3,198 | 929 | 98 | 51 | 1,078 | 4,551 |
| 4/26/19 | 510 | 3,049 | 24 | 3,073 | 914 | 95 | 50 | 1,059 | 4,642 |
| 4/29/19 | 844 | 3,155 | 24 | 3,179 | 906 | 108 | 49 | 1,063 | 5,086 |
| 4/30/19 | 825 | 3,250 | 21 | 3,271 | 1,124 | 103 | 50 | 1,277 | 5,373 |

Pending Applications (Monthly Average)



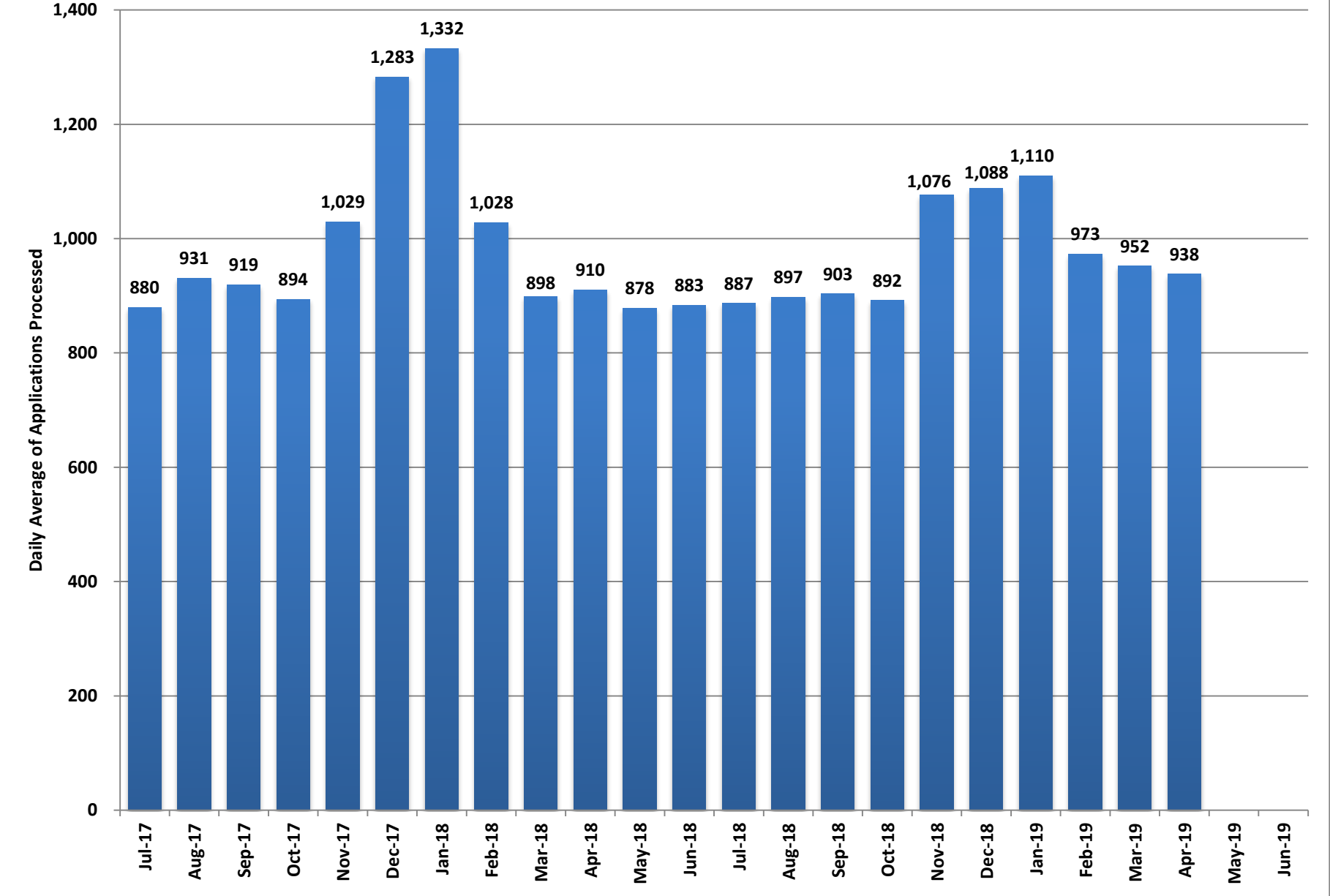
**Pending Applications
(Monthly Averages)**

| Month | Unregistered Applications | Family Medical (FMC) | | | Aged, Blind, and Disabled (MAABD) | | | | Total Medicaid Pending Applications |
|--------|---------------------------|----------------------|-------------------|--------------------|-----------------------------------|--------------------|-------------------|--------------------|-------------------------------------|
| | | Pending <= 45 Days | Pending > 45 Days | Total Applications | Pending <= 45 Days | Pending 46-90 Days | Pending > 90 Days | Total Applications | |
| Jul-17 | 280 | 3,013 | 49 | 3,062 | 865 | 81 | 44 | 990 | 4,333 |
| Aug-17 | 383 | 3,203 | 46 | 3,249 | 942 | 64 | 53 | 1,059 | 4,690 |
| Sep-17 | 410 | 3,304 | 67 | 3,372 | 908 | 77 | 54 | 1,038 | 4,819 |
| Oct-17 | 417 | 2,967 | 75 | 3,042 | 939 | 91 | 51 | 1,080 | 4,539 |
| Nov-17 | 2,655 | 5,516 | 39 | 5,555 | 1,211 | 105 | 48 | 1,365 | 9,575 |
| Dec-17 | 3,474 | 8,189 | 61 | 8,250 | 1,419 | 96 | 51 | 1,566 | 13,290 |
| Jan-18 | 712 | 6,027 | 75 | 6,102 | 1,215 | 108 | 50 | 1,374 | 8,188 |
| Feb-18 | 477 | 3,422 | 44 | 3,466 | 1,020 | 85 | 44 | 1,149 | 5,093 |
| Mar-18 | 300 | 2,926 | 35 | 2,962 | 999 | 86 | 47 | 1,132 | 4,394 |
| Apr-18 | 269 | 2,803 | 26 | 2,829 | 985 | 88 | 48 | 1,122 | 4,219 |
| May-18 | 291 | 2,724 | 22 | 2,746 | 981 | 95 | 55 | 1,131 | 4,168 |
| Jun-18 | 352 | 2,815 | 25 | 2,840 | 881 | 118 | 53 | 1,053 | 4,246 |
| Jul-18 | 336 | 3,116 | 29 | 3,145 | 987 | 112 | 58 | 1,157 | 4,639 |
| Aug-18 | 325 | 3,521 | 30 | 3,551 | 1,097 | 110 | 55 | 1,261 | 5,137 |
| Sep-18 | 252 | 3,505 | 34 | 3,539 | 1,029 | 127 | 60 | 1,216 | 5,008 |
| Oct-18 | 292 | 2,776 | 33 | 2,809 | 990 | 124 | 62 | 1,176 | 4,276 |
| Nov-18 | 1,055 | 4,834 | 35 | 4,869 | 1,164 | 124 | 69 | 1,357 | 7,281 |
| Dec-18 | 1,072 | 6,962 | 44 | 7,006 | 1,198 | 102 | 80 | 1,379 | 9,457 |
| Jan-19 | 380 | 7,507 | 71 | 7,578 | 1,125 | 118 | 68 | 1,311 | 9,269 |
| Feb-19 | 400 | 3,856 | 73 | 3,929 | 1,024 | 113 | 65 | 1,202 | 5,532 |
| Mar-19 | 312 | 3,561 | 20 | 3,581 | 997 | 106 | 57 | 1,159 | 5,053 |
| Apr-19 | 434 | 3,934 | 23 | 3,957 | 1,058 | 95 | 55 | 1,208 | 5,599 |
| May-19 | | | | | | | | | |
| Jun-19 | | | | | | | | | |

Fiscal Year Averages

| Fiscal Year | Unregistered Applications | Family Medical (FMC) | | | Aged, Blind, and Disabled (MAABD) | | | | Total Medicaid Pending Applications |
|-------------|---------------------------|----------------------|-------------------|--------------------|-----------------------------------|--------------------|-------------------|--------------------|-------------------------------------|
| | | Pending <= 45 Days | Pending > 45 Days | Total Applications | Pending <= 45 Days | Pending 46-90 Days | Pending > 90 Days | Total Applications | |
| FY14 | 13,681 | 7,925 | 8,462 | 16,387 | 2,094 | 1,197 | 5,355 | 8,646 | 35,324 |
| FY15 | 3,376 | 6,810 | 3,357 | 10,167 | 1,369 | 498 | 1,129 | 2,997 | 16,405 |
| FY16 | 797 | 4,150 | 28 | 4,178 | 974 | 162 | 271 | 1,407 | 6,382 |
| FY17 | 486 | 3,961 | 27 | 3,988 | 938 | 84 | 56 | 1,079 | 5,552 |
| FY18 | 835 | 3,909 | 47 | 3,956 | 1,030 | 91 | 50 | 1,172 | 5,963 |
| FY19 YTD | 486 | 4,357 | 39 | 4,397 | 1,067 | 113 | 63 | 1,243 | 6,125 |

Medicaid Applications Processed per Working Day

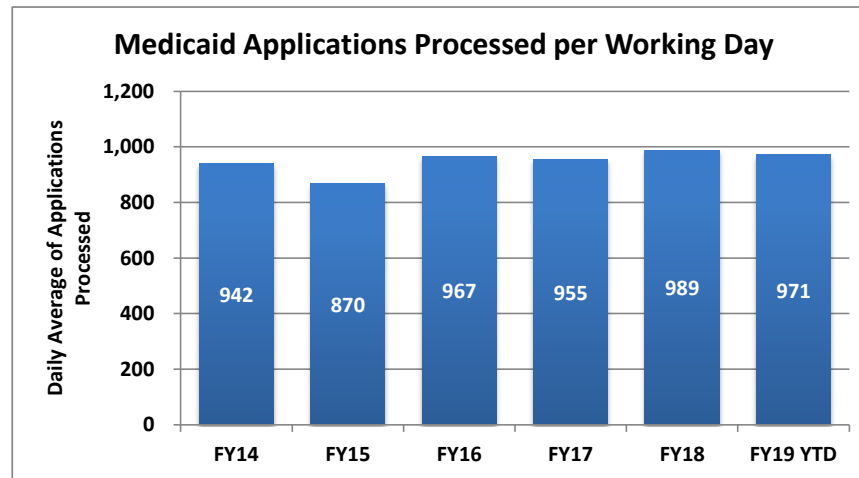


Pending Applications Processed Per Day

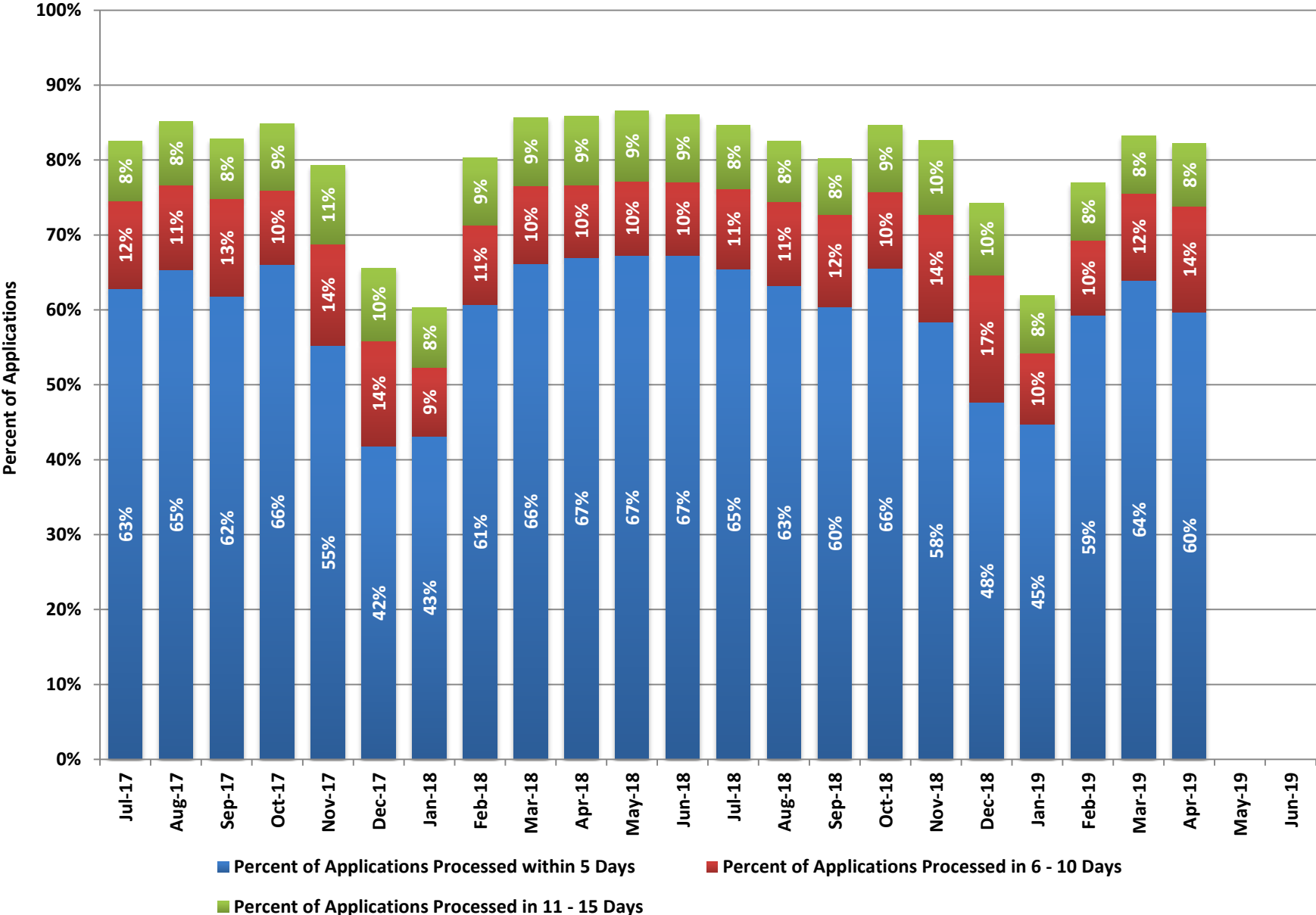
| Month | Medicaid Applications Processed per Working Day |
|--------|---|
| Jul-17 | 880 |
| Aug-17 | 931 |
| Sep-17 | 919 |
| Oct-17 | 894 |
| Nov-17 | 1,029 |
| Dec-17 | 1,283 |
| Jan-18 | 1,332 |
| Feb-18 | 1,028 |
| Mar-18 | 898 |
| Apr-18 | 910 |
| May-18 | 878 |
| Jun-18 | 883 |
| Jul-18 | 887 |
| Aug-18 | 897 |
| Sep-18 | 903 |
| Oct-18 | 892 |
| Nov-18 | 1,076 |
| Dec-18 | 1,088 |
| Jan-19 | 1,110 |
| Feb-19 | 973 |
| Mar-19 | 952 |
| Apr-19 | 938 |
| May-19 | |
| Jun-19 | |

Fiscal Year Averages

| Fiscal Year | Medicaid Applications Processed per Working Day |
|-------------|---|
| FY14 | 942 |
| FY15 | 870 |
| FY16 | 967 |
| FY17 | 955 |
| FY18 | 989 |
| FY19 YTD | 971 |



Applications Processed within 15 Days



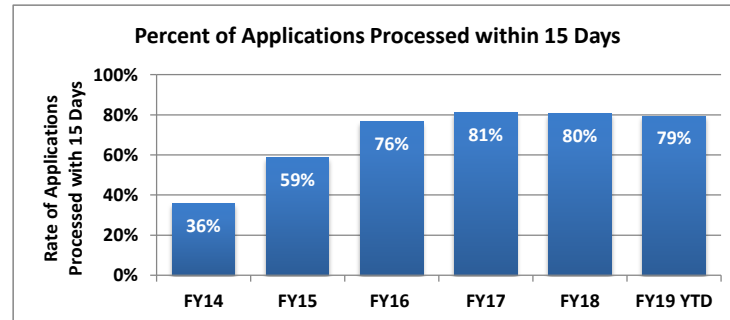
Applications Processed Within 15 Days

| Month | Applications Processed within 5 Days | Percent of Applications Processed within 5 Days | Applications Processed in 6 - 10 Days | Percent of Applications Processed in 6 - 10 Days | Applications Processed in 11 - 15 Days | Percent of Applications Processed in 11 - 15 Days | Applications Processed within 15 Days | Total Applications Processed | Percent of Applications Processed within 15 Days |
|--------|--------------------------------------|---|---------------------------------------|--|--|---|---------------------------------------|------------------------------|--|
| Jul-17 | 11,055 | 63% | 2,065 | 12% | 1,407 | 8% | 14,527 | 17,594 | 83% |
| Aug-17 | 13,970 | 65% | 2,438 | 11% | 1,800 | 8% | 18,208 | 21,403 | 85% |
| Sep-17 | 11,351 | 62% | 2,386 | 13% | 1,474 | 8% | 15,211 | 18,376 | 83% |
| Oct-17 | 12,397 | 66% | 1,849 | 10% | 1,644 | 9% | 15,890 | 18,765 | 85% |
| Nov-17 | 10,782 | 55% | 2,663 | 14% | 2,050 | 11% | 15,495 | 19,544 | 79% |
| Dec-17 | 10,728 | 42% | 3,615 | 14% | 2,498 | 10% | 16,841 | 25,651 | 66% |
| Jan-18 | 12,064 | 43% | 2,565 | 9% | 2,226 | 8% | 16,855 | 27,969 | 60% |
| Feb-18 | 11,850 | 61% | 2,068 | 11% | 1,762 | 9% | 15,680 | 19,523 | 80% |
| Mar-18 | 13,085 | 66% | 2,053 | 10% | 1,804 | 9% | 16,942 | 19,757 | 86% |
| Apr-18 | 12,796 | 67% | 1,851 | 10% | 1,765 | 9% | 16,412 | 19,104 | 86% |
| May-18 | 12,992 | 67% | 1,912 | 10% | 1,809 | 9% | 16,713 | 19,306 | 87% |
| Jun-18 | 12,472 | 67% | 1,823 | 10% | 1,660 | 9% | 15,955 | 18,544 | 86% |
| Jul-18 | 12,174 | 65% | 2,019 | 11% | 1,558 | 8% | 15,751 | 18,619 | 85% |
| Aug-18 | 13,040 | 63% | 2,303 | 11% | 1,667 | 8% | 17,010 | 20,634 | 82% |
| Sep-18 | 10,360 | 60% | 2,115 | 12% | 1,284 | 8% | 13,759 | 17,158 | 80% |
| Oct-18 | 12,842 | 66% | 2,030 | 10% | 1,731 | 9% | 16,603 | 19,615 | 85% |
| Nov-18 | 11,928 | 58% | 2,932 | 14% | 2,023 | 10% | 16,883 | 20,445 | 83% |
| Dec-18 | 10,370 | 48% | 3,691 | 17% | 2,078 | 10% | 16,139 | 21,742 | 74% |
| Jan-19 | 10,412 | 45% | 2,219 | 10% | 1,801 | 8% | 14,432 | 23,296 | 62% |
| Feb-19 | 10,948 | 59% | 1,850 | 10% | 1,419 | 8% | 14,217 | 18,480 | 77% |
| Mar-19 | 12,767 | 64% | 2,337 | 12% | 1,529 | 8% | 16,633 | 19,979 | 83% |
| Apr-19 | 12,319 | 60% | 2,914 | 14% | 1,735 | 8% | 16,968 | 20,629 | 82% |
| May-19 | | | | | | | | | |
| Jun-19 | | | | | | | | | |

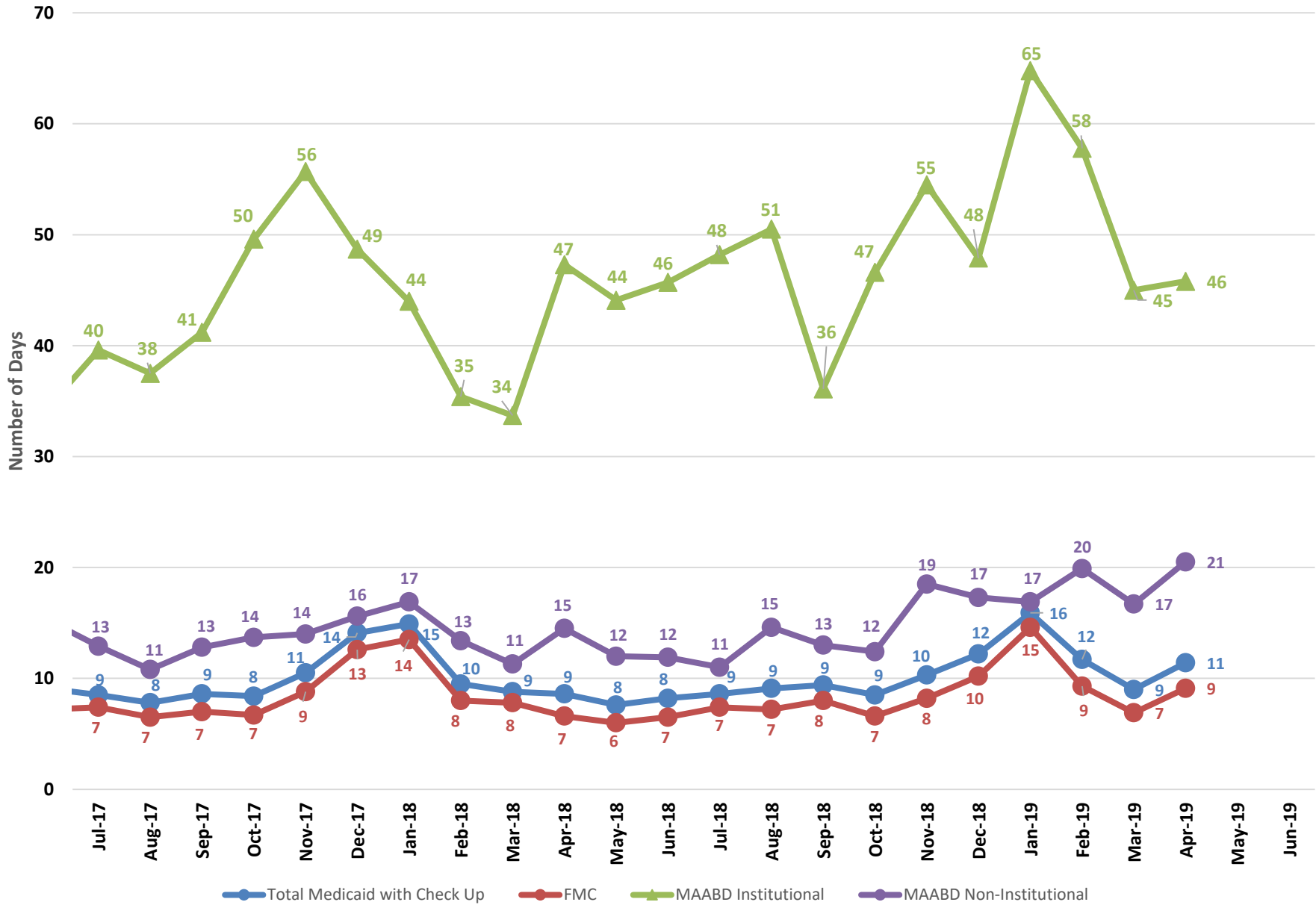
Note: This data reflects Family Medical (FMC), Newly Eligible Adults, Aged, Blind and Disabled (MAABD), and Nevada Check Up applications.

Percent of Applications Processed within 15 Days - Fiscal Year Averages

| Fiscal Year | % within 15 Days |
|-------------|------------------|
| FY14 | 36% |
| FY15 | 59% |
| FY16 | 76% |
| FY17 | 81% |
| FY18 | 80% |
| FY19 YTD | 79% |



Average Processing Time (Days)

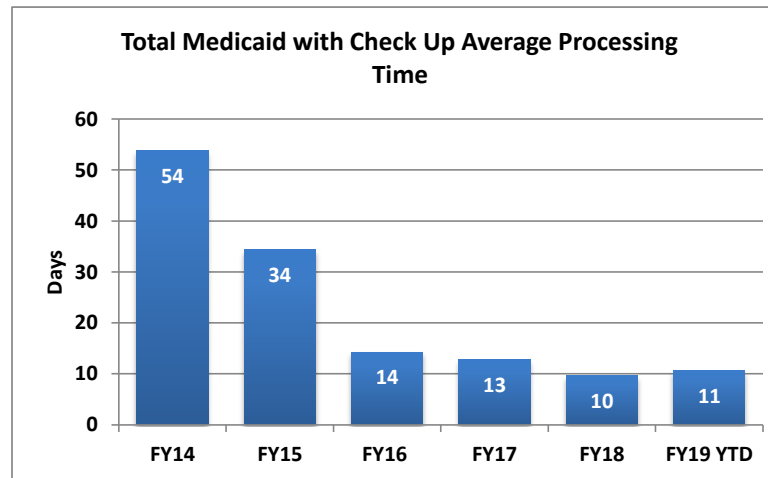


Average Processing Times (Days)

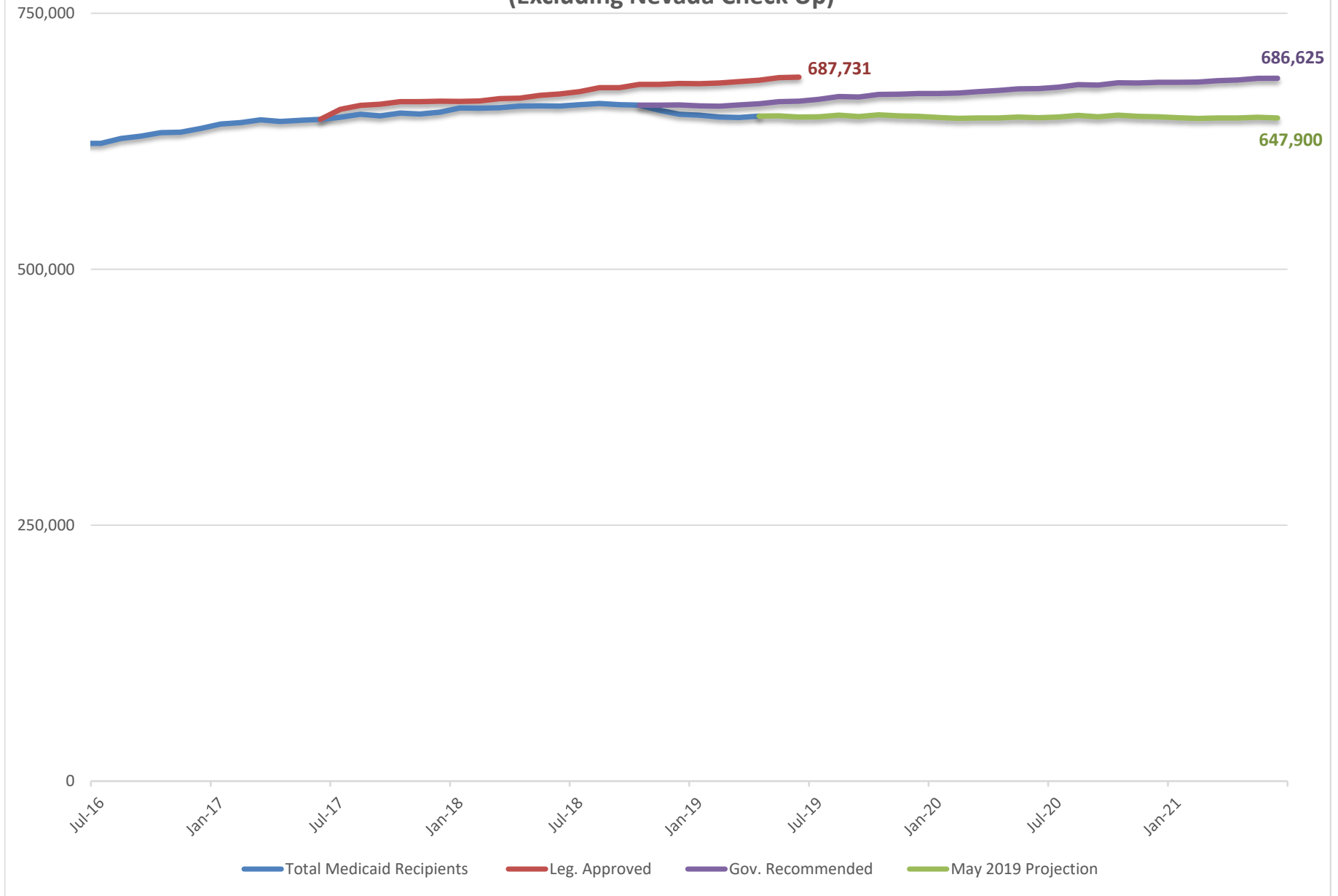
| Month | Total Medicaid with Check Up | FMC | MAABD Institutional | MAABD Non-Institutional |
|--------|------------------------------|-----|---------------------|-------------------------|
| Jul-17 | 9 | 7 | 40 | 13 |
| Aug-17 | 8 | 7 | 38 | 11 |
| Sep-17 | 9 | 7 | 41 | 13 |
| Oct-17 | 8 | 7 | 50 | 14 |
| Nov-17 | 11 | 9 | 56 | 14 |
| Dec-17 | 14 | 13 | 49 | 16 |
| Jan-18 | 15 | 14 | 44 | 17 |
| Feb-18 | 10 | 8 | 35 | 13 |
| Mar-18 | 9 | 8 | 34 | 11 |
| Apr-18 | 9 | 7 | 47 | 15 |
| May-18 | 8 | 6 | 44 | 12 |
| Jun-18 | 8 | 7 | 46 | 12 |
| Jul-18 | 9 | 7 | 48 | 11 |
| Aug-18 | 9 | 7 | 51 | 15 |
| Sep-18 | 9 | 8 | 36 | 13 |
| Oct-18 | 9 | 7 | 47 | 12 |
| Nov-18 | 10 | 8 | 55 | 19 |
| Dec-18 | 12 | 10 | 48 | 17 |
| Jan-19 | 16 | 15 | 65 | 17 |
| Feb-19 | 12 | 9 | 58 | 20 |
| Mar-19 | 9 | 7 | 45 | 17 |
| Apr-19 | 11 | 9 | 46 | 21 |
| May-19 | | | | |
| Jun-19 | | | | |

Fiscal Year Averages

| Fiscal Year | Total Medicaid with Check Up | FMC | MAABD Institutional | MAABD Non-Institutional |
|-----------------|------------------------------|-----|---------------------|-------------------------|
| FY14 | 54 | | | |
| FY15 | 34 | 22 | 69 | 45 |
| FY16 | 14 | 10 | 63 | 30 |
| FY17 | 13 | 12 | 51 | 14 |
| FY18 | 10 | 8 | 44 | 13 |
| FY19 YTD | 11 | 9 | 50 | 16 |



Total Medicaid Recipients (Excluding Nevada Check Up)



Total Medicaid Recipients (Excluding Nevada Check Up)

FY16 & FY17 Biennium

| Month | Total Medicaid Recipients |
|--------|---------------------------|
| Jul-15 | 582,531 |
| Aug-15 | 586,654 |
| Sep-15 | 594,359 |
| Oct-15 | 599,701 |
| Nov-15 | 602,421 |
| Dec-15 | 608,812 |
| Jan-16 | 614,216 |
| Feb-16 | 620,541 |
| Mar-16 | 623,109 |
| Apr-16 | 621,250 |
| May-16 | 622,259 |
| Jun-16 | 622,986 |
| Jul-16 | 623,002 |
| Aug-16 | 627,802 |
| Sep-16 | 629,956 |
| Oct-16 | 633,535 |
| Nov-16 | 634,037 |
| Dec-16 | 637,501 |
| Jan-17 | 642,028 |
| Feb-17 | 643,194 |
| Mar-17 | 645,963 |
| Apr-17 | 644,535 |
| May-17 | 645,540 |
| Jun-17 | 646,464 |

FY18 & FY19 Biennium

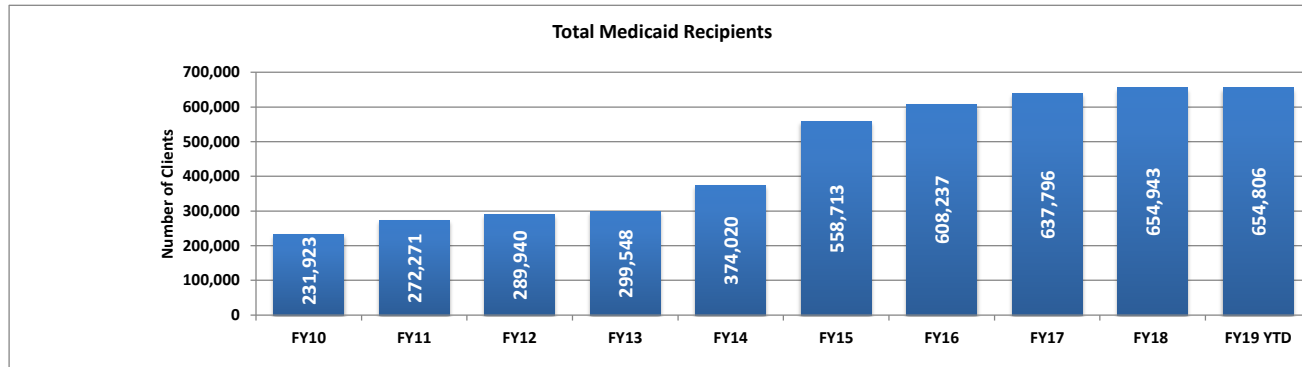
| Month | Total Medicaid Recipients | Leg. Approved | Gov. Recommended | May 2019 Projection |
|--------|---------------------------|---------------|------------------|---------------------|
| Jul-17 | 648,513 | 656,163 | | |
| Aug-17 | 651,526 | 660,148 | | |
| Sep-17 | 650,002 | 661,255 | | |
| Oct-17 | 652,613 | 663,747 | | |
| Nov-17 | 651,756 | 663,722 | | |
| Dec-17 | 653,456 | 664,345 | | |
| Jan-18 | 657,620 | 664,076 | | |
| Feb-18 | 657,515 | 664,436 | | |
| Mar-18 | 657,751 | 666,637 | | |
| Apr-18 | 659,505 | 667,258 | | |
| May-18 | 659,677 | 669,834 | | |
| Jun-18 | 659,387 | 671,362 | | |
| Jul-18 | 660,791 | 673,606 | | |
| Aug-18 | 661,988 | 677,370 | | |
| Sep-18 | 660,881 | 677,385 | | |
| Oct-18 | 660,477 | 680,535 | 660,456 | |
| Nov-18 | 655,369 | 680,603 | 660,434 | |
| Dec-18 | 651,512 | 681,627 | 660,539 | |
| Jan-19 | 650,494 | 681,422 | 659,636 | |
| Feb-19 | 648,640 | 681,965 | 659,343 | |
| Mar-19 | 648,272 | 683,378 | 660,620 | |
| Apr-19 | 649,636 | 684,779 | 661,689 | 649,636 |
| May-19 | | 687,226 | 663,795 | 649,920 |
| Jun-19 | | 687,731 | 664,337 | 648,806 |

FY20 & FY21 Biennium

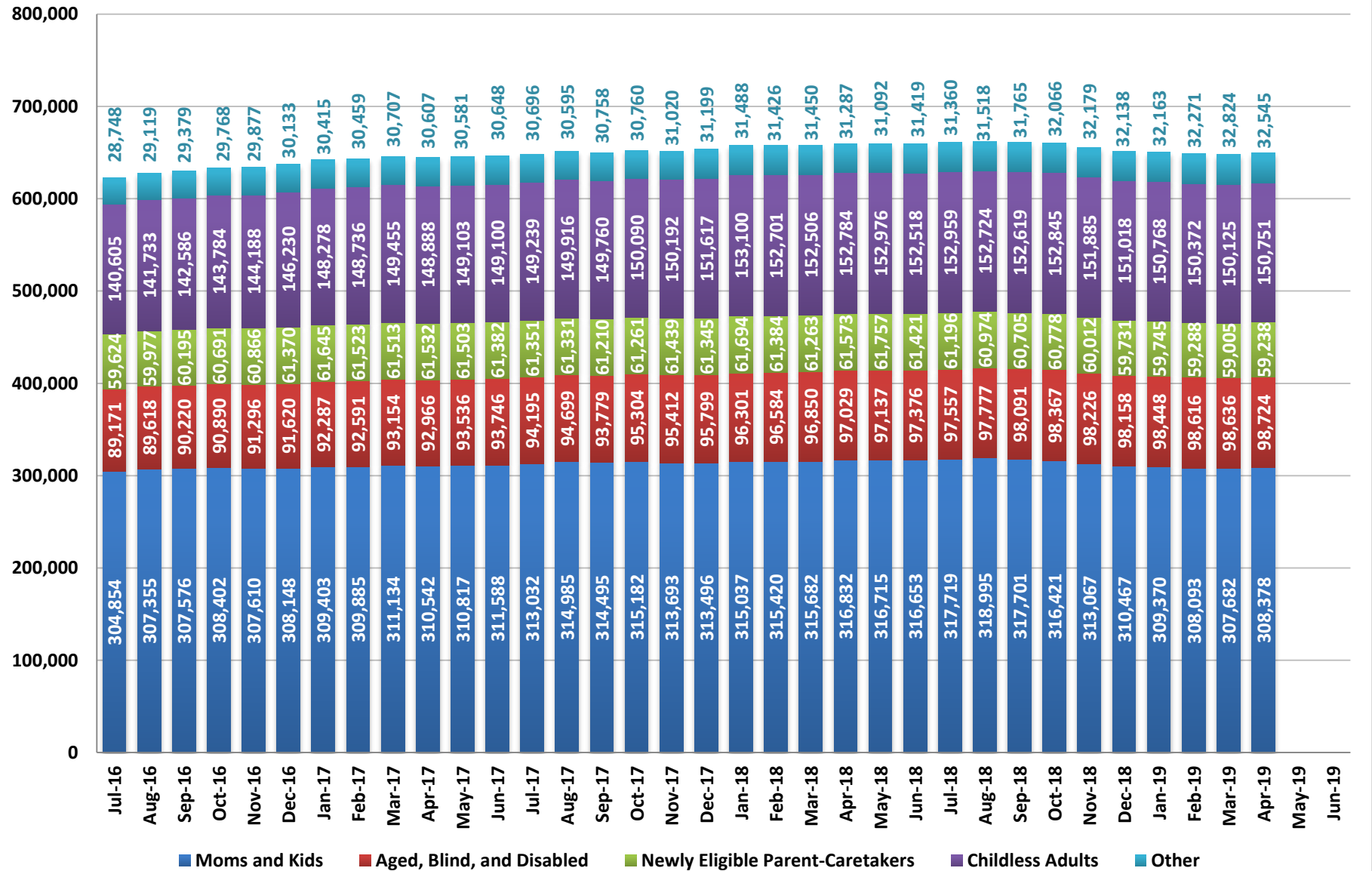
| Month | Gov. Recommended | May 2019 Projection |
|--------|------------------|---------------------|
| Jul-19 | 666,029 | 649,001 |
| Aug-19 | 668,822 | 650,460 |
| Sep-19 | 668,417 | 649,139 |
| Oct-19 | 670,945 | 650,904 |
| Nov-19 | 670,994 | 649,848 |
| Dec-19 | 671,822 | 649,352 |
| Jan-20 | 671,775 | 648,310 |
| Feb-20 | 672,129 | 647,482 |
| Mar-20 | 673,641 | 647,860 |
| Apr-20 | 674,636 | 647,758 |
| May-20 | 676,310 | 648,643 |
| Jun-20 | 676,534 | 648,137 |
| Jul-20 | 678,003 | 648,749 |
| Aug-20 | 680,417 | 650,323 |
| Sep-20 | 679,879 | 649,076 |
| Oct-20 | 682,244 | 650,607 |
| Nov-20 | 682,068 | 649,373 |
| Dec-20 | 682,766 | 649,011 |
| Jan-21 | 682,609 | 648,180 |
| Feb-21 | 682,823 | 647,490 |
| Mar-21 | 684,222 | 647,933 |
| Apr-21 | 685,023 | 647,762 |
| May-21 | 686,537 | 648,500 |
| Jun-21 | 686,625 | 647,900 |

Fiscal Year Averages

| Fiscal Year | Total Medicaid Recipients | Percent Change |
|-------------|---------------------------|----------------|
| FY10 | 231,923 | |
| FY11 | 272,271 | 17.4% |
| FY12 | 289,940 | 6.5% |
| FY13 | 299,548 | 3.3% |
| FY14 | 374,020 | 24.9% |
| FY15 | 558,713 | 49.4% |
| FY16 | 608,237 | 8.9% |
| FY17 | 637,796 | 4.9% |
| FY18 | 654,943 | 2.7% |
| FY19 YTD | 654,806 | 0.0% |



Medicaid Caseloads by Category (Excluding Nevada Check Up)



Medicaid Caseloads (Excluding Nevada Check Up)

Caseload by Month

| Month | Moms and Kids | Aged, Blind, and Disabled | Newly Eligible Parent-Caretakers | Childless Adults | Other | Total |
|--------|---------------|---------------------------|----------------------------------|------------------|--------|---------|
| Jul-16 | 304,854 | 89,171 | 59,624 | 140,605 | 28,748 | 623,002 |
| Aug-16 | 307,355 | 89,618 | 59,977 | 141,733 | 29,119 | 627,802 |
| Sep-16 | 307,576 | 90,220 | 60,195 | 142,586 | 29,379 | 629,956 |
| Oct-16 | 308,402 | 90,890 | 60,691 | 143,784 | 29,768 | 633,535 |
| Nov-16 | 307,610 | 91,296 | 60,866 | 144,188 | 29,877 | 633,837 |
| Dec-16 | 308,148 | 91,620 | 61,370 | 146,230 | 30,133 | 637,501 |
| Jan-17 | 309,403 | 92,287 | 61,645 | 148,278 | 30,415 | 642,028 |
| Feb-17 | 309,885 | 92,591 | 61,523 | 148,736 | 30,459 | 643,194 |
| Mar-17 | 311,134 | 93,154 | 61,513 | 149,455 | 30,707 | 645,963 |
| Apr-17 | 310,542 | 92,966 | 61,532 | 148,888 | 30,607 | 644,535 |
| May-17 | 310,817 | 93,536 | 61,503 | 149,103 | 30,581 | 645,540 |
| Jun-17 | 311,588 | 93,746 | 61,382 | 149,100 | 30,648 | 646,464 |
| Jul-17 | 313,032 | 94,195 | 61,351 | 149,239 | 30,696 | 648,513 |
| Aug-17 | 314,985 | 94,699 | 61,331 | 149,916 | 30,595 | 651,526 |
| Sep-17 | 314,495 | 93,779 | 61,210 | 149,760 | 30,758 | 650,002 |
| Oct-17 | 315,182 | 95,304 | 61,261 | 150,090 | 30,760 | 652,597 |
| Nov-17 | 313,693 | 95,412 | 61,439 | 150,192 | 31,020 | 651,756 |
| Dec-17 | 313,496 | 95,799 | 61,345 | 151,617 | 31,199 | 653,456 |
| Jan-18 | 315,037 | 96,301 | 61,694 | 153,100 | 31,488 | 657,620 |
| Feb-18 | 315,420 | 96,584 | 61,384 | 152,701 | 31,426 | 657,515 |
| Mar-18 | 315,682 | 96,850 | 61,263 | 152,506 | 31,450 | 657,751 |
| Apr-18 | 316,832 | 97,029 | 61,573 | 152,784 | 31,287 | 659,505 |
| May-18 | 316,715 | 97,137 | 61,757 | 152,976 | 31,092 | 659,677 |
| Jun-18 | 316,653 | 97,376 | 61,421 | 152,518 | 31,419 | 659,387 |
| Jul-18 | 317,719 | 97,557 | 61,196 | 152,959 | 31,360 | 660,791 |
| Aug-18 | 318,995 | 97,777 | 60,974 | 152,724 | 31,518 | 661,988 |
| Sep-18 | 317,701 | 98,091 | 60,705 | 152,619 | 31,765 | 660,881 |
| Oct-18 | 316,421 | 98,367 | 60,778 | 152,845 | 32,066 | 660,477 |
| Nov-18 | 313,067 | 98,226 | 60,012 | 151,885 | 32,179 | 655,369 |
| Dec-18 | 310,467 | 98,158 | 59,731 | 151,018 | 32,138 | 651,512 |
| Jan-19 | 309,370 | 98,448 | 59,745 | 150,768 | 32,163 | 650,494 |
| Feb-19 | 308,093 | 98,616 | 59,288 | 150,372 | 32,271 | 648,640 |
| Mar-19 | 307,682 | 98,636 | 59,005 | 150,125 | 32,824 | 648,272 |
| Apr-19 | 308,378 | 98,724 | 59,238 | 150,751 | 32,545 | 649,636 |
| May-19 | | | | | | |
| Jun-19 | | | | | | |

Month over Month Change in Caseload

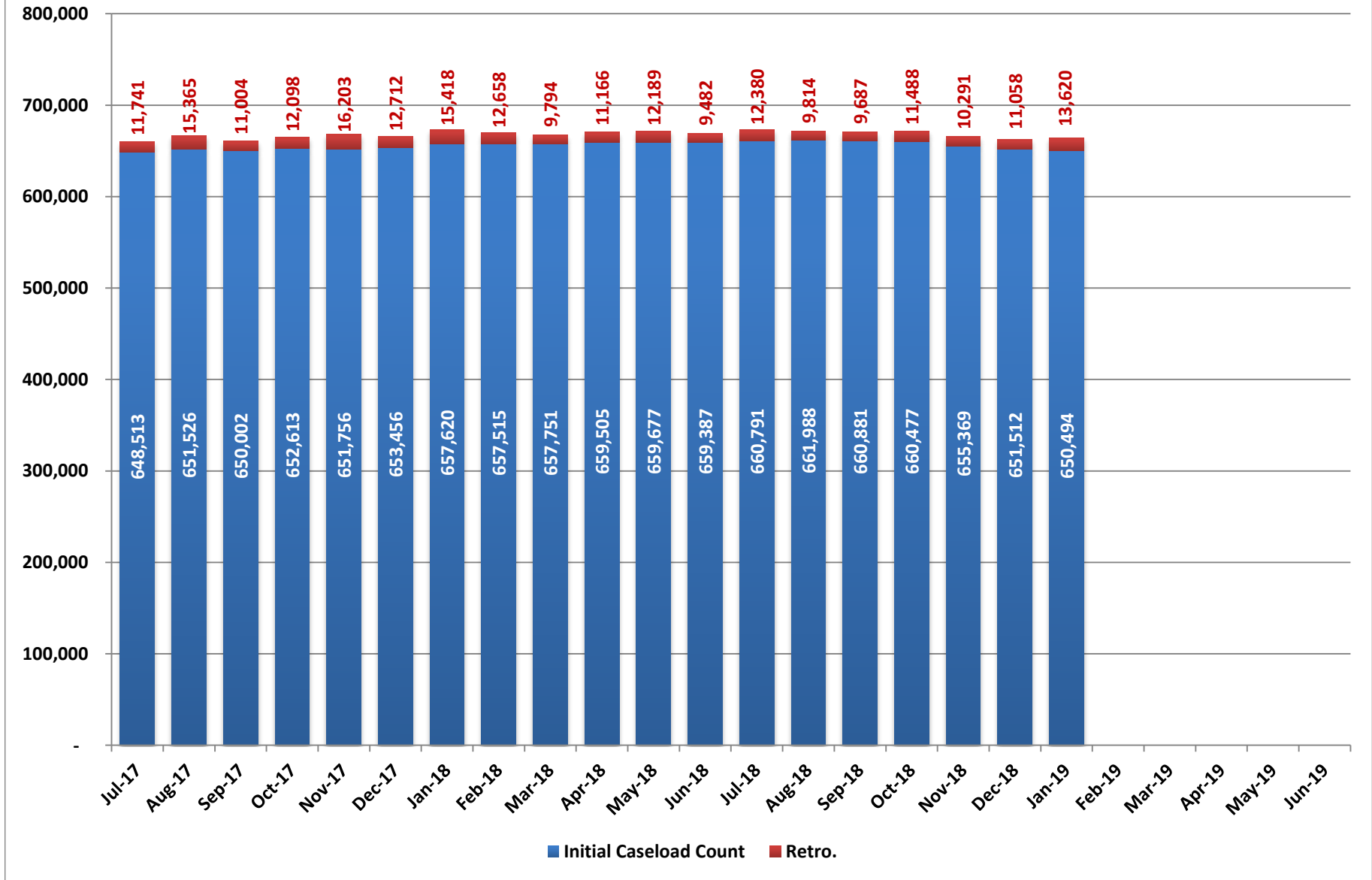
| Month | Moms and Kids | Aged, Blind, and Disabled | Newly Eligible Parent-Caretakers | Childless Adults | Other | Total |
|--------|---------------|---------------------------|----------------------------------|------------------|-------|---------|
| Jul-16 | 547 | 511 | (490) | (523) | 17 | 62 |
| Aug-16 | 2,501 | 447 | 353 | 1,128 | 371 | 4,800 |
| Sep-16 | 221 | 602 | 218 | 853 | 260 | 2,154 |
| Oct-16 | 826 | 670 | 496 | 1,198 | 389 | 3,579 |
| Nov-16 | (792) | 406 | 175 | 404 | 109 | 302 |
| Dec-16 | 538 | 324 | 504 | 2,042 | 256 | 3,664 |
| Jan-17 | 1,255 | 667 | 275 | 2,048 | 282 | 4,527 |
| Feb-17 | 482 | 304 | (122) | 458 | 44 | 1,166 |
| Mar-17 | 1,249 | 563 | (10) | 719 | 248 | 2,769 |
| Apr-17 | (592) | (188) | 19 | (567) | (100) | (1,428) |
| May-17 | 275 | 570 | (29) | 215 | (26) | 1,005 |
| Jun-17 | 771 | 210 | (121) | (3) | 67 | 924 |
| Jul-17 | 1,444 | 449 | (31) | 139 | 48 | 2,049 |
| Aug-17 | 1,953 | 504 | (20) | 677 | (101) | 3,013 |
| Sep-17 | (490) | (920) | (121) | (156) | 163 | (1,524) |
| Oct-17 | 687 | 1,525 | 51 | 330 | 2 | 2,595 |
| Nov-17 | (1,489) | 108 | 178 | 102 | 260 | (841) |
| Dec-17 | (197) | 387 | (94) | 1,425 | 179 | 1,700 |
| Jan-18 | 1,541 | 502 | 349 | 1,483 | 289 | 4,164 |
| Feb-18 | 383 | 283 | (310) | (399) | (62) | (105) |
| Mar-18 | 262 | 266 | (121) | (195) | 24 | 236 |
| Apr-18 | 1,150 | 179 | 310 | 278 | (163) | 1,754 |
| May-18 | (117) | 108 | 184 | 192 | (195) | 172 |
| Jun-18 | (62) | 239 | (336) | (458) | 327 | (290) |
| Jul-18 | 1,066 | 181 | (225) | 441 | (59) | 1,404 |
| Aug-18 | 1,276 | 220 | (222) | (235) | 158 | 1,197 |
| Sep-18 | (1,294) | 314 | (269) | (105) | 247 | (1,107) |
| Oct-18 | (1,280) | 276 | 73 | 226 | 301 | (404) |
| Nov-18 | (3,354) | (141) | (766) | (960) | 113 | (5,108) |
| Dec-18 | (2,600) | (68) | (281) | (867) | (41) | (3,857) |
| Jan-19 | (1,097) | 290 | 14 | (250) | 25 | (1,018) |
| Feb-19 | (1,277) | 168 | (457) | (396) | 108 | (1,854) |
| Mar-19 | (411) | 20 | (283) | (247) | 553 | (368) |
| Apr-19 | 696 | 88 | 233 | 626 | (279) | 1,364 |
| May-19 | | | | | | |
| Jun-19 | | | | | | |

Note: Other includes Child Welfare, County Match, Waivers, CHIP to Medicaid, and other minor caseloads.

Fiscal Year Average Caseload

| Fiscal Year | Moms and Kids | Aged, Blind, and Disabled | Newly Eligible Parent-Caretakers | Childless Adults | Other | Total |
|-------------|---------------|---------------------------|----------------------------------|------------------|--------|---------|
| FY14 | 247,913 | 72,442 | 11,353 | 25,852 | 16,470 | 374,031 |
| FY15 | 291,013 | 79,931 | 47,528 | 116,729 | 23,526 | 558,726 |
| FY16 | 299,439 | 85,818 | 58,284 | 136,771 | 27,871 | 608,182 |
| FY17 | 308,943 | 91,758 | 60,985 | 146,057 | 30,036 | 637,779 |
| FY18 | 315,102 | 95,872 | 61,419 | 151,450 | 31,099 | 654,942 |
| FY19 YTD | 312,789 | 98,260 | 60,067 | 151,607 | 32,083 | 654,806 |

Total Medicaid - Initial and Retroactive Caseload Counts (Excluding Nevada Check Up)



**Total Medicaid - Initial and Retroactive Caseload Counts
(Excluding Nevada Check up)**

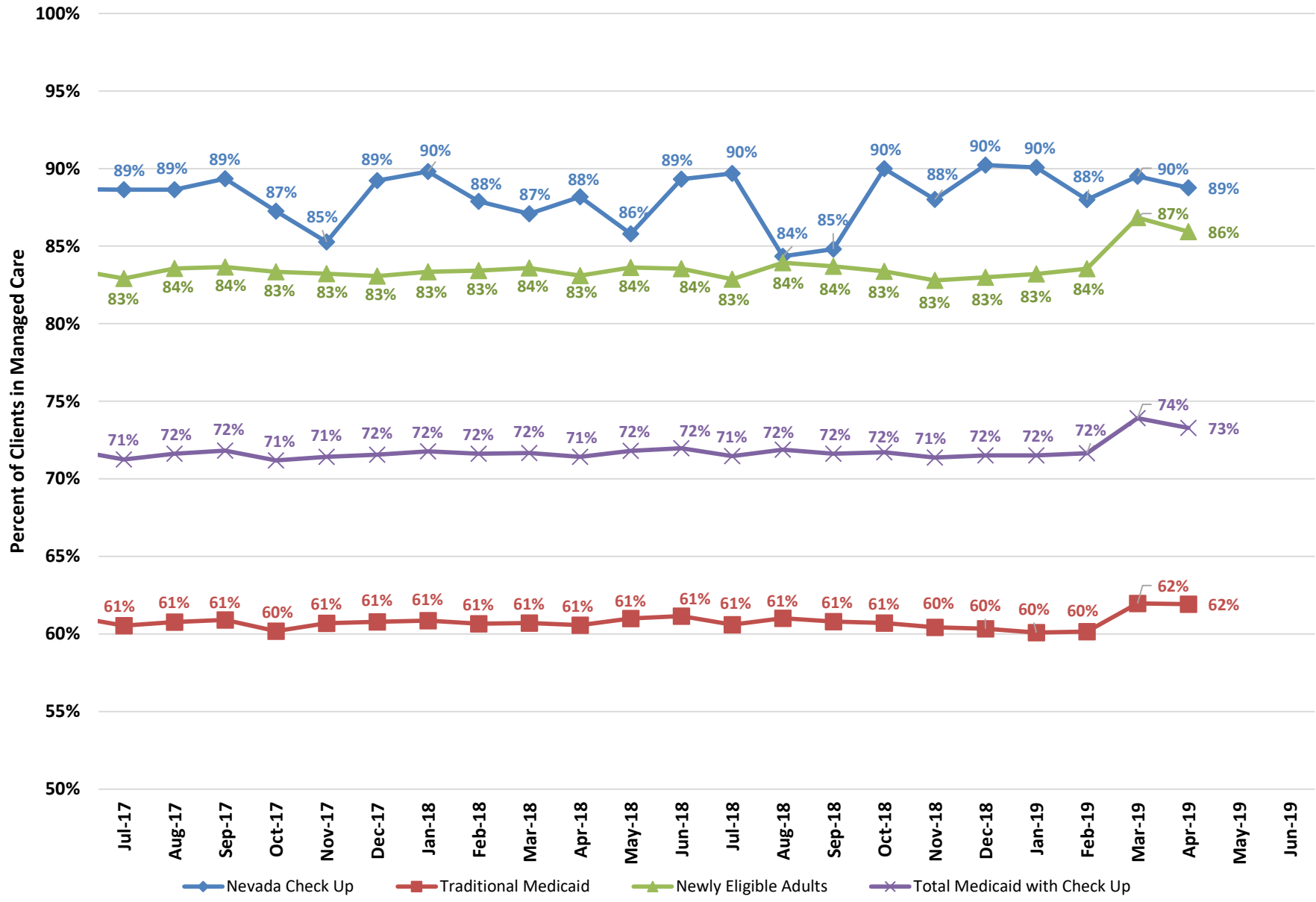
| | FMC | | | | Aged | | | | Blind and Disabled | | | | Total MAABD | | | | Total Medicaid | | | |
|--------|------------------------|--------|----------------------|----------|------------------------|--------|----------------------|---------|------------------------|--------|----------------------|---------|------------------------|--------|----------------------|---------|------------------------|--------|----------------------|---------|
| | Initial Caseload Count | Retro. | Caseload with Retro. | % Retro. | Initial Caseload Count | Retro. | Caseload with Retro. | % Retro | Initial Caseload Count | Retro. | Caseload with Retro. | % Retro | Initial Caseload Count | Retro. | Caseload with Retro. | % Retro | Initial Caseload Count | Retro. | Caseload with Retro. | % Retro |
| Jul-17 | 537,079 | 10,372 | 547,451 | 1.9% | 12,834 | 143 | 12,977 | 1.1% | 41,969 | 367 | 42,336 | 0.9% | 100,584 | 1,249 | 101,833 | 1.2% | 648,513 | 11,741 | 660,254 | 1.8% |
| Aug-17 | 539,698 | 13,901 | 553,599 | 2.6% | 12,893 | 134 | 13,027 | 1.0% | 42,177 | 449 | 42,626 | 1.1% | 101,116 | 1,319 | 102,435 | 1.3% | 651,526 | 15,365 | 666,891 | 2.4% |
| Sep-17 | 538,976 | 9,652 | 548,628 | 1.8% | 12,674 | 163 | 12,837 | 1.3% | 41,364 | 339 | 41,703 | 0.8% | 100,124 | 1,206 | 101,330 | 1.2% | 650,002 | 11,004 | 661,006 | 1.7% |
| Oct-17 | 540,063 | 10,313 | 550,376 | 1.9% | 12,966 | 262 | 13,228 | 2.0% | 42,260 | 578 | 42,838 | 1.4% | 101,672 | 1,649 | 103,321 | 1.6% | 652,613 | 12,098 | 664,711 | 1.9% |
| Nov-17 | 538,882 | 14,764 | 553,646 | 2.7% | 12,972 | 175 | 13,147 | 1.4% | 42,221 | 381 | 42,602 | 0.9% | 101,787 | 1,323 | 103,110 | 1.3% | 651,756 | 16,203 | 667,959 | 2.5% |
| Dec-17 | 540,244 | 11,442 | 551,686 | 2.1% | 13,066 | 165 | 13,231 | 1.3% | 42,252 | 317 | 42,569 | 0.7% | 102,164 | 1,144 | 103,308 | 1.1% | 653,456 | 12,712 | 666,168 | 1.9% |
| Jan-18 | 543,745 | 13,932 | 557,677 | 2.6% | 13,128 | 179 | 13,307 | 1.4% | 42,322 | 426 | 42,748 | 1.0% | 102,652 | 1,323 | 103,975 | 1.3% | 657,620 | 15,418 | 673,038 | 2.3% |
| Feb-18 | 543,323 | 11,386 | 554,709 | 2.1% | 13,159 | 133 | 13,292 | 1.0% | 42,297 | 380 | 42,677 | 0.9% | 103,000 | 1,141 | 104,141 | 1.1% | 657,515 | 12,658 | 670,173 | 1.9% |
| Mar-18 | 543,242 | 8,573 | 551,815 | 1.6% | 13,225 | 183 | 13,408 | 1.4% | 42,370 | 330 | 42,700 | 0.8% | 103,256 | 1,088 | 104,344 | 1.1% | 657,751 | 9,794 | 667,545 | 1.5% |
| Apr-18 | 544,962 | 9,870 | 554,832 | 1.8% | 13,220 | 155 | 13,375 | 1.2% | 42,429 | 347 | 42,776 | 0.8% | 103,481 | 1,140 | 104,621 | 1.1% | 659,505 | 11,166 | 670,671 | 1.7% |
| May-18 | 544,915 | 10,940 | 555,855 | 2.0% | 13,275 | 127 | 13,402 | 1.0% | 42,361 | 327 | 42,688 | 0.8% | 103,627 | 1,074 | 104,701 | 1.0% | 659,677 | 12,189 | 671,866 | 1.8% |
| Jun-18 | 544,170 | 8,314 | 552,484 | 1.5% | 13,335 | 131 | 13,466 | 1.0% | 42,340 | 307 | 42,647 | 0.7% | 103,911 | 1,023 | 104,934 | 1.0% | 659,387 | 9,482 | 668,869 | 1.4% |
| Jul-18 | 545,367 | 11,163 | 556,530 | 2.0% | 13,373 | 114 | 13,487 | 0.8% | 42,289 | 337 | 42,626 | 0.8% | 104,109 | 1,060 | 105,169 | 1.0% | 660,791 | 12,380 | 673,171 | 1.9% |
| Aug-18 | 546,202 | 8,742 | 554,944 | 1.6% | 13,458 | 122 | 13,580 | 0.9% | 42,318 | 270 | 42,588 | 0.6% | 104,400 | 918 | 105,318 | 0.9% | 661,988 | 9,814 | 671,802 | 1.5% |
| Sep-18 | 544,785 | 8,646 | 553,431 | 1.6% | 13,509 | 96 | 13,605 | 0.7% | 42,338 | 256 | 42,594 | 0.6% | 104,719 | 889 | 105,608 | 0.8% | 660,881 | 9,687 | 670,568 | 1.5% |
| Oct-18 | 543,977 | 10,329 | 554,306 | 1.9% | 13,612 | 115 | 13,727 | 0.8% | 42,607 | 301 | 42,908 | 0.7% | 105,071 | 985 | 106,056 | 0.9% | 660,477 | 11,488 | 671,965 | 1.7% |
| Nov-18 | 538,927 | 9,282 | 548,209 | 1.7% | 13,618 | 116 | 13,734 | 0.8% | 42,326 | 249 | 42,575 | 0.6% | 104,942 | 848 | 105,790 | 0.8% | 655,369 | 10,291 | 665,660 | 1.6% |
| Dec-18 | 535,062 | 10,217 | 545,279 | 1.9% | 13,640 | 98 | 13,738 | 0.7% | 42,108 | 247 | 42,355 | 0.6% | 104,887 | 727 | 105,614 | 0.7% | 651,512 | 11,058 | 662,570 | 1.7% |
| Jan-19 | 533,782 | 12,727 | 546,509 | 2.4% | 13,690 | 72 | 13,762 | 0.5% | 42,185 | 296 | 42,481 | 0.7% | 105,151 | 799 | 105,950 | 0.8% | 650,494 | 13,620 | 664,114 | 2.1% |
| Feb-19 | 531,767 | | | | 13,735 | | | | 42,139 | | | | 105,346 | | | | 648,640 | | | |
| Mar-19 | 530,912 | | | | 13,811 | | | | 41,983 | | | | 105,359 | | | | 648,272 | | | |
| Apr-19 | 532,249 | | | | 13,892 | | | | 41,859 | | | | 105,467 | | | | 649,636 | | | |
| May-19 | | | | | | | | | | | | | | | | | | | | |
| Jun-19 | | | | | | | | | | | | | | | | | | | | |
| Jul-19 | | | | | | | | | | | | | | | | | | | | |

Fiscal Year Averages

| Fiscal Year | FMC | | | | Aged | | | | Blind and Disabled | | | | Total MAABD | | | | Total Medicaid | | | |
|-------------|------------------------|--------|----------------------|----------|------------------------|--------|----------------------|---------|------------------------|--------|----------------------|---------|------------------------|--------|----------------------|---------|------------------------|--------|----------------------|---------|
| | Initial Caseload Count | Retro. | Caseload with Retro. | % Retro. | Initial Caseload Count | Retro. | Caseload with Retro. | % Retro | Initial Caseload Count | Retro. | Caseload with Retro. | % Retro | Initial Caseload Count | Retro. | Caseload with Retro. | % Retro | Initial Caseload Count | Retro. | Caseload with Retro. | % Retro |
| FY14 | 287,197 | 33,884 | 321,081 | 11.1% | 10,974 | 298 | 11,272 | 2.7% | 34,629 | 1,380 | 36,009 | 4.0% | 77,858 | 2,402 | 80,260 | 3.1% | 374,043 | 36,454 | 410,497 | 9.3% |
| FY15 | 463,507 | 20,609 | 484,116 | 4.5% | 11,623 | 243 | 11,866 | 2.1% | 37,622 | 537 | 38,159 | 1.4% | 85,646 | 1,523 | 87,169 | 1.8% | 558,774 | 22,319 | 581,092 | 4.0% |
| FY16 | 505,872 | 12,322 | 518,194 | 2.4% | 12,181 | 173 | 12,355 | 1.4% | 39,686 | 352 | 40,037 | 0.9% | 91,761 | 1,159 | 92,920 | 1.3% | 608,237 | 13,600 | 621,837 | 2.2% |
| FY17 | 529,040 | 11,158 | 540,198 | 2.1% | 12,699 | 172 | 12,870 | 1.4% | 41,562 | 329 | 41,891 | 0.8% | 97,926 | 993 | 98,919 | 1.0% | 637,798 | 12,258 | 650,056 | 1.9% |
| FY18 | 541,608 | 11,121 | 552,730 | 2.1% | 13,062 | 163 | 13,225 | 1.2% | 42,197 | 379 | 42,576 | 0.9% | 102,281 | 1,223 | 103,504 | 1.2% | 654,943 | 12,486 | 667,429 | 1.9% |
| FY19 TYD | 538,303 | 10,158 | 551,315 | 1.9% | 13,634 | 105 | 13,662 | 0.8% | 42,215 | 279 | 42,590 | 0.7% | 104,945 | 889 | 105,644 | 0.8% | 654,806 | 11,191 | 668,550 | 1.7% |

Retro numbers were not updated after January 2019 due to the implementation of the new data warehouse system.

Percent in Managed Care by Client Type

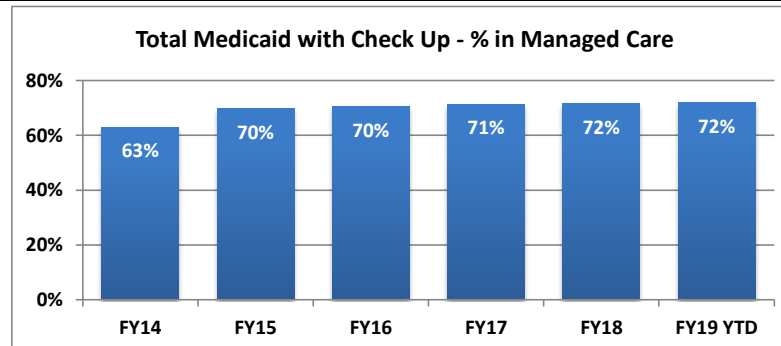


Percent of Medicaid Clients in Managed Care

| Month | Nevada Check Up | | | Traditional Medicaid | | | Newly Eligible Adults | | | Total Medicaid with Check Up | | |
|--------|-------------------------|----------------|-------------------|-------------------------|----------------------------|-------------------|-------------------------|----------------|-------------------|------------------------------|----------------------------|-------------------|
| | Managed Care Enrollment | Total Caseload | % in Managed Care | Managed Care Enrollment | Total Caseload net of SLMB | % in Managed Care | Managed Care Enrollment | Total Caseload | % in Managed Care | Managed Care Enrollment | Total Caseload net of SLMB | % in Managed Care |
| Jul-17 | 23,375 | 26,369 | 89% | 271,098 | 447,823 | 61% | 175,004 | 211,060 | 83% | 469,477 | 658,883 | 71% |
| Aug-17 | 23,581 | 26,604 | 89% | 273,685 | 450,312 | 61% | 176,921 | 211,736 | 84% | 474,187 | 662,048 | 72% |
| Sep-17 | 24,067 | 26,935 | 89% | 273,748 | 449,444 | 61% | 176,858 | 211,428 | 84% | 474,673 | 660,872 | 72% |
| Oct-17 | 24,008 | 27,515 | 87% | 272,130 | 452,179 | 60% | 176,515 | 211,805 | 83% | 472,653 | 663,984 | 71% |
| Nov-17 | 23,338 | 27,372 | 85% | 273,716 | 450,947 | 61% | 176,442 | 212,028 | 83% | 473,496 | 662,975 | 71% |
| Dec-17 | 23,950 | 26,842 | 89% | 273,938 | 450,648 | 61% | 177,263 | 213,384 | 83% | 475,151 | 664,032 | 72% |
| Jan-18 | 24,531 | 27,314 | 90% | 275,856 | 453,285 | 61% | 179,385 | 215,236 | 83% | 479,772 | 668,521 | 72% |
| Feb-18 | 24,452 | 27,825 | 88% | 275,591 | 454,337 | 61% | 178,985 | 214,570 | 83% | 479,028 | 668,907 | 72% |
| Mar-18 | 24,289 | 27,893 | 87% | 276,151 | 454,917 | 61% | 179,117 | 214,266 | 84% | 479,557 | 669,183 | 72% |
| Apr-18 | 24,435 | 27,713 | 88% | 276,052 | 455,809 | 61% | 178,554 | 214,869 | 83% | 479,041 | 670,678 | 71% |
| May-18 | 23,861 | 27,813 | 86% | 277,963 | 455,730 | 61% | 179,883 | 215,101 | 84% | 481,707 | 670,831 | 72% |
| Jun-18 | 24,479 | 27,406 | 89% | 278,584 | 455,512 | 61% | 179,198 | 214,489 | 84% | 482,261 | 670,001 | 72% |
| Jul-18 | 25,170 | 28,066 | 90% | 277,091 | 457,264 | 61% | 177,917 | 214,714 | 83% | 480,178 | 671,978 | 71% |
| Aug-18 | 24,129 | 28,608 | 84% | 280,235 | 459,334 | 61% | 179,828 | 214,260 | 84% | 484,192 | 673,594 | 72% |
| Sep-18 | 23,769 | 28,027 | 85% | 278,434 | 457,989 | 61% | 178,996 | 213,869 | 84% | 481,199 | 671,858 | 72% |
| Oct-18 | 25,328 | 28,144 | 90% | 277,632 | 457,284 | 61% | 178,585 | 214,196 | 83% | 481,545 | 671,480 | 72% |
| Nov-18 | 25,466 | 28,937 | 88% | 274,842 | 454,758 | 60% | 175,882 | 212,434 | 83% | 476,190 | 667,192 | 71% |
| Dec-18 | 26,276 | 29,122 | 90% | 272,818 | 452,153 | 60% | 175,351 | 211,278 | 83% | 474,445 | 663,431 | 72% |
| Jan-19 | 26,921 | 29,890 | 90% | 271,637 | 452,063 | 60% | 175,632 | 211,069 | 83% | 474,190 | 663,132 | 72% |
| Feb-19 | 26,916 | 30,588 | 88% | 271,727 | 451,736 | 60% | 175,640 | 210,227 | 84% | 474,283 | 661,963 | 72% |
| Mar-19 | 26,721 | 29,854 | 90% | 279,501 | 451,066 | 62% | 182,154 | 209,747 | 87% | 488,376 | 660,813 | 74% |
| Apr-19 | 24,278 | 27,350 | 89% | 278,102 | 449,060 | 62% | 180,985 | 210,608 | 86% | 483,365 | 659,668 | 73% |
| May-19 | | | | | | | | | | | | |
| Jun-19 | | | | | | | | | | | | |

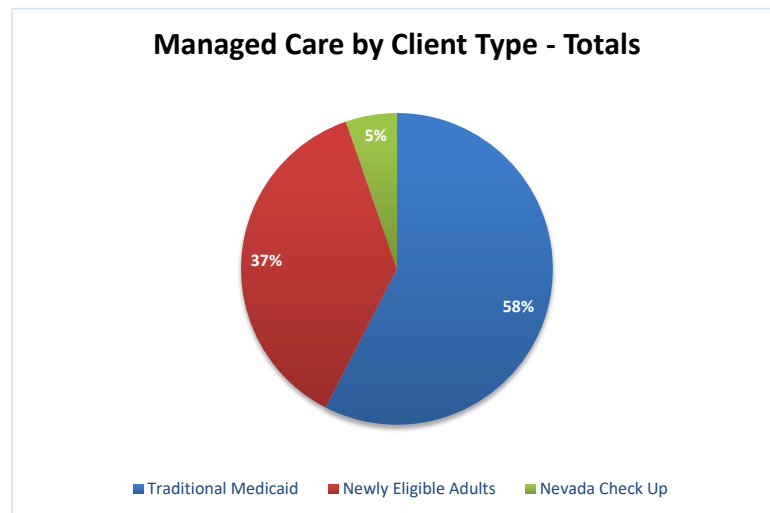
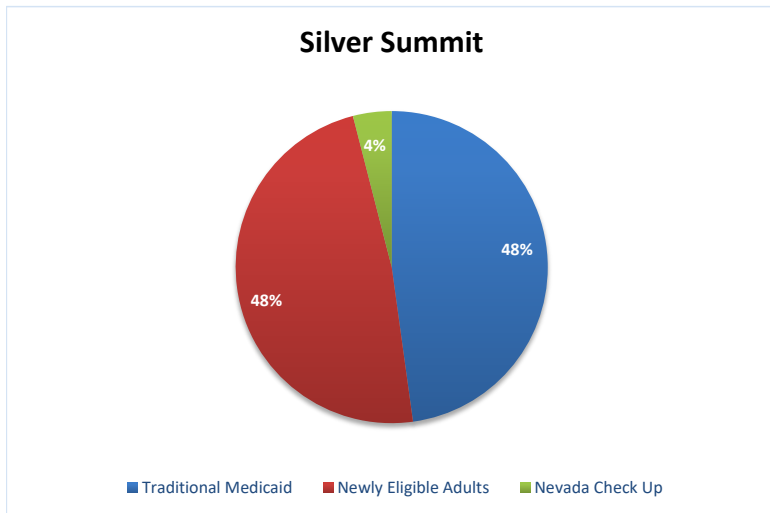
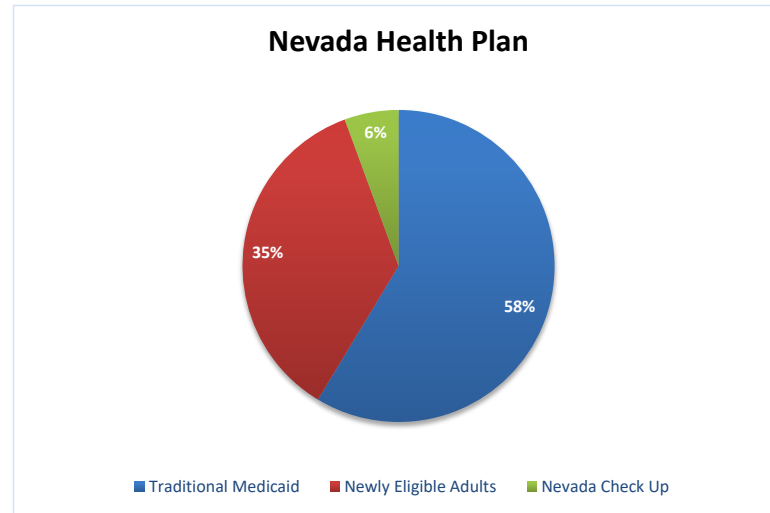
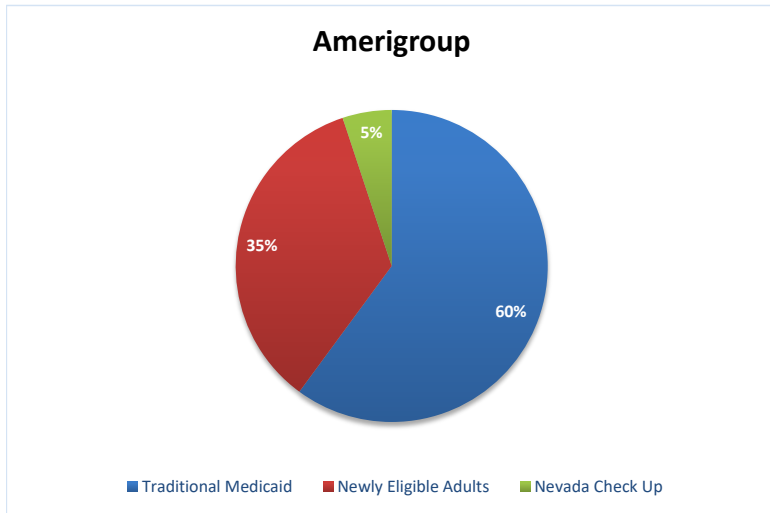
Fiscal Year Averages

| | Managed Care Enrollment | % in Managed Care |
|----------|-------------------------|-------------------|
| FY14 | 243,142 | 63% |
| FY15 | 395,743 | 70% |
| FY16 | 437,740 | 70% |
| FY17 | 462,312 | 71% |
| FY18 | 476,750 | 72% |
| FY19 YTD | 479,796 | 72% |



Note: Traditional Medicaid totals include both cat 11 (CHIP Expansion), and cat 12 (TANF/CHAP) populations.

Managed Care by Client Type Fiscal Year 2019 YTD



Managed Care Providers

| Month | Amerigroup | | | | | | | | Health Plan of Nevada | | | | | | | | Total Managed Care Enrollment |
|--------|----------------------|---------------------------|-----------------------|---------------------|-----------------|----------------------|----------------|------------|-----------------------|---------------------------|-----------------------|---------------------|-----------------|----------------------|----------------|------------|-------------------------------|
| | Traditional Medicaid | % of Traditional Medicaid | Newly Eligible Adults | % of Newly Eligible | Nevada Check Up | % of Nevada Check Up | Total for Plan | % of Total | Traditional Medicaid | % of Traditional Medicaid | Newly Eligible Adults | % of Newly Eligible | Nevada Check Up | % of Nevada Check Up | Total for Plan | % of Total | |
| Jul-17 | 113,592 | 42% | 66,248 | 38% | 8,858 | 38% | 188,698 | 41% | 154,678 | 57% | 105,971 | 61% | 14,258 | 62% | 274,907 | 59% | 469,477 |
| Aug-17 | 112,905 | 42% | 65,821 | 38% | 8,844 | 38% | 187,570 | 40% | 155,089 | 57% | 105,810 | 61% | 14,337 | 61% | 275,236 | 59% | 474,187 |
| Sep-17 | 111,249 | 41% | 64,672 | 37% | 8,932 | 38% | 184,853 | 40% | 154,443 | 57% | 104,698 | 60% | 14,533 | 61% | 273,674 | 58% | 474,673 |
| Oct-17 | 109,094 | 41% | 63,422 | 37% | 8,739 | 37% | 181,255 | 39% | 152,097 | 56% | 103,233 | 59% | 14,390 | 60% | 269,720 | 58% | 472,653 |
| Nov-17 | 108,354 | 40% | 62,040 | 36% | 8,250 | 36% | 178,644 | 38% | 151,418 | 56% | 101,623 | 58% | 13,889 | 60% | 266,930 | 57% | 473,496 |
| Dec-17 | 107,376 | 40% | 60,953 | 35% | 8,312 | 35% | 176,641 | 38% | 150,716 | 55% | 100,444 | 58% | 14,168 | 60% | 265,328 | 56% | 475,151 |
| Jan-18 | 106,979 | 39% | 60,277 | 34% | 8,464 | 35% | 175,720 | 37% | 150,836 | 55% | 99,870 | 57% | 14,298 | 59% | 265,004 | 56% | 479,772 |
| Feb-18 | 106,008 | 39% | 59,139 | 34% | 8,414 | 35% | 173,561 | 37% | 150,030 | 55% | 98,782 | 56% | 14,178 | 58% | 262,990 | 55% | 479,028 |
| Mar-18 | 105,352 | 38% | 58,666 | 33% | 8,394 | 35% | 172,412 | 36% | 149,617 | 54% | 97,834 | 55% | 13,992 | 58% | 261,443 | 55% | 479,557 |
| Apr-18 | 104,847 | 38% | 57,914 | 32% | 8,355 | 34% | 171,116 | 36% | 148,539 | 54% | 96,400 | 54% | 14,006 | 57% | 258,945 | 54% | 479,041 |
| May-18 | 104,899 | 38% | 57,883 | 32% | 8,186 | 34% | 170,968 | 35% | 148,936 | 54% | 95,954 | 53% | 13,710 | 57% | 258,600 | 54% | 481,707 |
| Jun-18 | 106,415 | 38% | 59,104 | 33% | 8,493 | 35% | 174,012 | 36% | 147,915 | 53% | 94,493 | 53% | 14,059 | 57% | 256,467 | 53% | 482,261 |
| Jul-18 | 106,130 | 38% | 59,233 | 33% | 8,784 | 35% | 174,147 | 36% | 146,720 | 53% | 93,425 | 53% | 14,373 | 57% | 254,518 | 53% | 480,178 |
| Aug-18 | 107,663 | 38% | 60,459 | 34% | 8,409 | 35% | 176,531 | 36% | 147,917 | 53% | 94,012 | 52% | 13,794 | 57% | 255,723 | 53% | 484,192 |
| Sep-18 | 107,725 | 39% | 60,882 | 34% | 8,360 | 35% | 176,967 | 37% | 146,575 | 53% | 93,260 | 52% | 13,546 | 57% | 253,381 | 53% | 481,199 |
| Oct-18 | 108,023 | 39% | 61,760 | 35% | 9,043 | 36% | 178,826 | 37% | 145,598 | 52% | 92,311 | 52% | 14,331 | 57% | 252,240 | 52% | 481,545 |
| Nov-18 | 107,498 | 39% | 61,741 | 35% | 9,134 | 36% | 178,373 | 37% | 143,556 | 52% | 90,558 | 51% | 14,425 | 57% | 248,539 | 52% | 476,190 |
| Dec-18 | 107,138 | 39% | 62,435 | 36% | 9,508 | 36% | 179,081 | 38% | 142,095 | 52% | 89,703 | 51% | 14,737 | 56% | 246,535 | 52% | 474,445 |
| Jan-19 | 107,035 | 39% | 63,162 | 36% | 9,862 | 37% | 180,059 | 38% | 141,071 | 52% | 89,099 | 51% | 14,924 | 55% | 245,094 | 52% | 474,190 |
| Feb-19 | 107,049 | 39% | 63,164 | 36% | 9,861 | 37% | 180,074 | 38% | 141,145 | 52% | 89,105 | 51% | 14,920 | 55% | 245,170 | 52% | 474,283 |
| Mar-19 | 110,744 | 40% | 66,387 | 36% | 9,785 | 37% | 186,916 | 38% | 144,117 | 52% | 91,227 | 50% | 14,742 | 55% | 250,086 | 51% | 488,376 |
| Apr-19 | 110,644 | 40% | 66,467 | 37% | 8,817 | 36% | 185,928 | 38% | 143,253 | 52% | 90,444 | 50% | 13,503 | 56% | 247,200 | 51% | 483,365 |
| May-19 | | | | | | | | | | | | | | | | | |
| Jun-19 | | | | | | | | | | | | | | | | | |

Note:

Fiscal Year Averages

| Fiscal Year | Amerigroup | | | | | | | | Health Plan of Nevada | | | | | | | |
|-------------|----------------------|---------------------------|-----------------------|---------------------|-----------------|----------------------|----------------|------------|-----------------------|---------------------------|-----------------------|---------------------|-----------------|----------------------|----------------|------------|
| | Traditional Medicaid | % of Traditional Medicaid | Newly Eligible Adults | % of Newly Eligible | Nevada Check Up | % of Nevada Check Up | Total for Plan | % of Total | Traditional Medicaid | % of Traditional Medicaid | Newly Eligible Adults | % of Newly Eligible | Nevada Check Up | % of Nevada Check Up | Total for Plan | % of Total |
| FY14 | 110,819 | 45% | 54,962 | 42% | 7,744 | 39% | 173,525 | 44% | 133,741 | 55% | 76,332 | 58% | 12,146 | 61% | 222,218 | 56% |
| FY15 | 112,119 | 44% | 63,560 | 40% | 7,655 | 39% | 183,334 | 42% | 143,176 | 56% | 95,741 | 60% | 12,020 | 61% | 250,936 | 58% |
| FY16 | 114,584 | 44% | 65,662 | 40% | 8,222 | 39% | 188,468 | 42% | 148,317 | 56% | 100,569 | 60% | 13,030 | 61% | 261,916 | 58% |
| FY17 | 115,016 | 43% | 67,149 | 39% | 8,638 | 38% | 190,802 | 41% | 151,854 | 57% | 104,861 | 61% | 13,940 | 62% | 270,655 | 59% |
| FY18 | 108,089 | 40% | 61,345 | 35% | 8,520 | 36% | 177,954 | 38% | 151,193 | 55% | 100,426 | 57% | 14,152 | 59% | 265,770 | 56% |
| FY19 YTD | 107,965 | 39% | 62,569 | 35% | 9,156 | 36% | 179,690 | 37% | 144,205 | 52% | 91,314 | 51% | 14,330 | 56% | 249,849 | 52% |

Managed Care Providers (Continued)

| Month | Silver Summit | | | | | | | | Aetna | | | | | | | | Total Managed Care Enrollment |
|--------|----------------------|---------------------------|-----------------------|---------------------|-----------------|----------------------|----------------|------------|----------------------|---------------------------|-----------------------|---------------------|-----------------|----------------------|----------------|------------|-------------------------------|
| | Traditional Medicaid | % of Traditional Medicaid | Newly Eligible Adults | % of Newly Eligible | Nevada Check Up | % of Nevada Check Up | Total for Plan | % of Total | Traditional Medicaid | % of Traditional Medicaid | Newly Eligible Adults | % of Newly Eligible | Nevada Check Up | % of Nevada Check Up | Total for Plan | % of Total | |
| Jul-17 | 1,618 | 0.1% | 1,547 | 0.2% | 169 | 0.2% | 3,334 | 0.2% | 1,210 | 0.4% | 1,238 | 0.7% | 90 | 0.4% | 2,538 | 0.5% | 469,477 |
| Aug-17 | 5,691 | 0.6% | 5,290 | 0.9% | 400 | 0.7% | 11,381 | 0.7% | | | | | | | | | 474,187 |
| Sep-17 | 8,056 | 2.1% | 7,488 | 3.0% | 602 | 1.7% | 16,146 | 2.4% | | | | | | | | | 474,673 |
| Oct-17 | 10,939 | 2.9% | 9,860 | 4.2% | 879 | 2.5% | 21,678 | 3.4% | | | | | | | | | 472,653 |
| Nov-17 | 13,944 | 4.0% | 12,779 | 5.6% | 1,199 | 3.7% | 27,922 | 4.6% | | | | | | | | | 473,496 |
| Dec-17 | 15,846 | 5.1% | 15,866 | 7.2% | 1,470 | 5.1% | 33,182 | 5.9% | | | | | | | | | 475,151 |
| Jan-18 | 18,041 | 5.8% | 19,238 | 9.0% | 1,769 | 6.1% | 39,048 | 7.0% | | | | | | | | | 479,772 |
| Feb-18 | 19,553 | 6.5% | 21,064 | 10.7% | 1,860 | 7.2% | 42,477 | 8.1% | | | | | | | | | 479,028 |
| Mar-18 | 21,182 | 7.7% | 22,617 | 12.6% | 1,903 | 7.8% | 45,702 | 9.5% | | | | | | | | | 479,557 |
| Apr-18 | 22,666 | 8.2% | 24,240 | 13.6% | 2,074 | 8.5% | 48,980 | 10.2% | | | | | | | | | 479,041 |
| May-18 | 24,128 | 8.7% | 26,046 | 14.5% | 1,965 | 8.2% | 52,139 | 10.8% | | | | | | | | | 481,707 |
| Jun-18 | 24,254 | 8.7% | 25,601 | 14.3% | 1,927 | 7.9% | 51,782 | 10.7% | | | | | | | | | 482,261 |
| Jul-18 | 24,241 | 9.0% | 25,259 | 14.0% | 2,013 | 8.0% | 51,513 | 11.0% | | | | | | | | | 480,178 |
| Aug-18 | 24,655 | 8.8% | 25,357 | 14.1% | 1,926 | 8.0% | 51,938 | 10.7% | | | | | | | | | 484,192 |
| Sep-18 | 24,134 | 8.7% | 24,854 | 13.9% | 1,863 | 7.8% | 50,851 | 10.6% | | | | | | | | | 481,199 |
| Oct-18 | 24,011 | 8.6% | 24,514 | 13.7% | 1,954 | 7.7% | 50,479 | 10.5% | | | | | | | | | 481,545 |
| Nov-18 | 23,788 | 8.7% | 23,583 | 13.4% | 1,907 | 7.5% | 49,278 | 10.3% | | | | | | | | | 476,190 |
| Dec-18 | 23,585 | 8.6% | 23,213 | 13.2% | 2,031 | 7.7% | 48,829 | 10.3% | | | | | | | | | 474,445 |
| Jan-19 | 23,531 | 9.0% | 23,371 | 13.0% | 2,135 | 8.0% | 49,037 | 10.0% | | | | | | | | | 474,190 |
| Feb-19 | 23,533 | 8.7% | 23,371 | 13.3% | 2,135 | 7.9% | 49,039 | 10.3% | | | | | | | | | 474,283 |
| Mar-19 | 24,640 | 8.8% | 24,540 | 13.5% | 2,194 | 8.2% | 51,374 | 10.5% | | | | | | | | | 488,376 |
| Apr-19 | 24,205 | 8.7% | 24,074 | 13.3% | 1,958 | 8.1% | 50,237 | 10.4% | | | | | | | | | 483,365 |
| May-19 | | | | | | | | | | | | | | | | | |
| Jun-19 | | | | | | | | | | | | | | | | | |

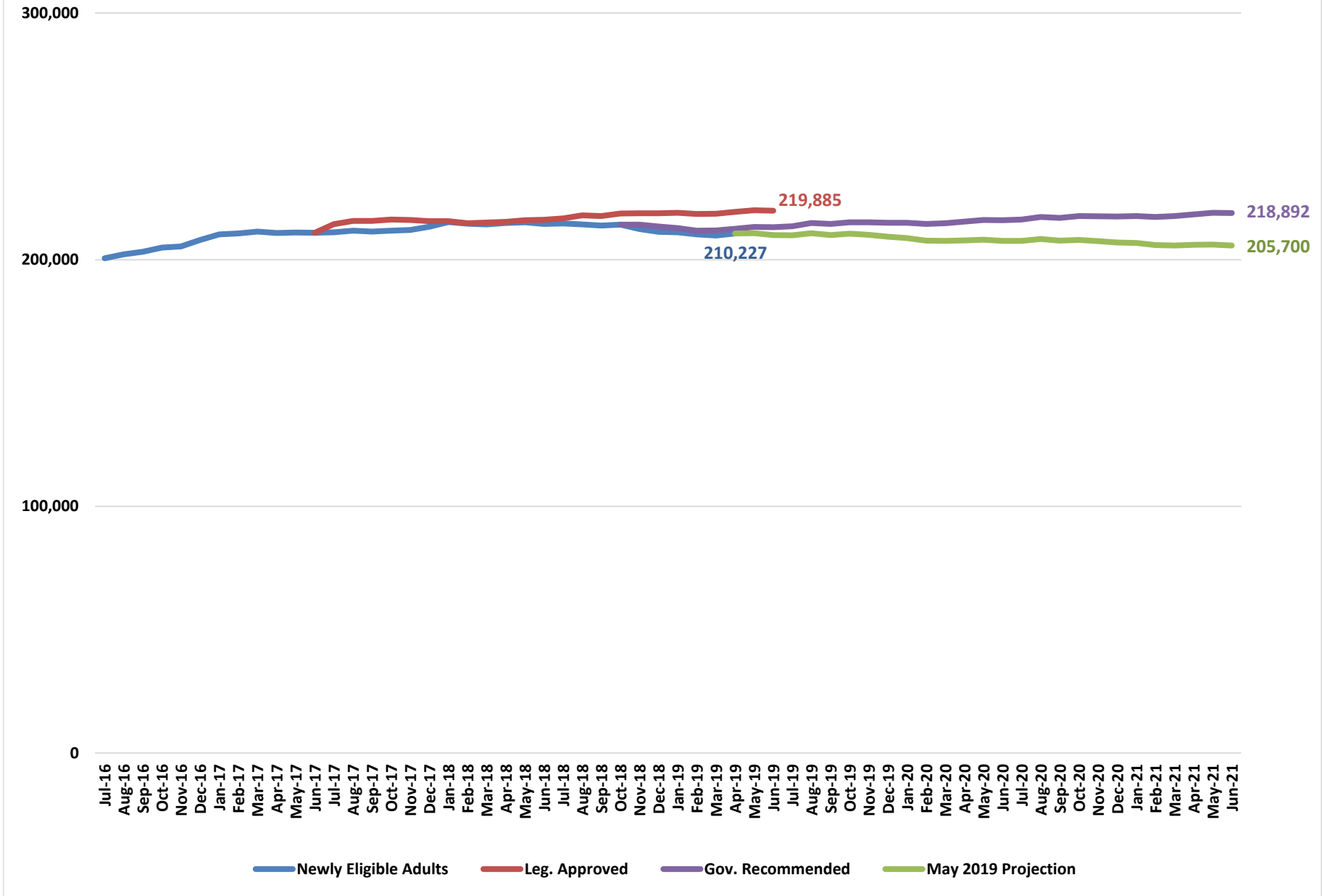
Note: Traditional Medicaid totals include both cat 11 (CHIP Expansion), and cat 12 (TANF/CHAP) populations.

Fiscal Year Averages

| Fiscal Year | Silver Summit | | | | | | | | Aetna | | | | | | | |
|-------------|----------------------|---------------------------|-----------------------|---------------------|-----------------|----------------------|----------------|------------|----------------------|---------------------------|-----------------------|---------------------|-----------------|----------------------|----------------|------------|
| | Traditional Medicaid | % of Traditional Medicaid | Newly Eligible Adults | % of Newly Eligible | Nevada Check Up | % of Nevada Check Up | Total for Plan | % of Total | Traditional Medicaid | % of Traditional Medicaid | Newly Eligible Adults | % of Newly Eligible | Nevada Check Up | % of Nevada Check Up | Total for Plan | % of Total |
| FY14 | | | | | | | | | | | | | | | | |
| FY15 | | | | | | | | | | | | | | | | |
| FY16 | | | | | | | | | | | | | | | | |
| FY17 | | | | | | | | | | | | | | | | |
| FY18 | 15,493 | 5.0% | 15,970 | 8.0% | 1,351 | 5.0% | 32,814 | 6.1% | 1,210 | 0.4% | 1,238 | 0.7% | 90 | 0.4% | 2,538 | 0.5% |
| FY19 | 24,032 | 8.8% | 24,214 | 13.5% | 2,012 | 7.9% | 50,258 | 10.5% | 0 | - | 0 | - | 0 | - | 0 | - |

Note: Aetna Better Health only participated in the Managed Care program for two months. Their case loads for the two months are included in Totals

Newly Eligible Adults



Newly Eligible Adults

FY16 & FY17 Biennium

| Month | Newly Eligible Adults |
|--------|-----------------------|
| Jul-15 | 182,223 |
| Aug-15 | 183,742 |
| Sep-15 | 187,110 |
| Oct-15 | 189,623 |
| Nov-15 | 192,224 |
| Dec-15 | 196,446 |
| Jan-16 | 199,534 |
| Feb-16 | 203,292 |
| Mar-16 | 203,939 |
| Apr-16 | 202,469 |
| May-16 | 202,255 |
| Jun-16 | 201,613 |
| Jul-16 | 200,583 |
| Aug-16 | 202,122 |
| Sep-16 | 203,163 |
| Oct-16 | 204,878 |
| Nov-16 | 205,406 |
| Dec-16 | 207,966 |
| Jan-17 | 210,296 |
| Feb-17 | 210,670 |
| Mar-17 | 211,414 |
| Apr-17 | 210,861 |
| May-17 | 211,053 |
| Jun-17 | 210,960 |

FY18 & FY19 Biennium

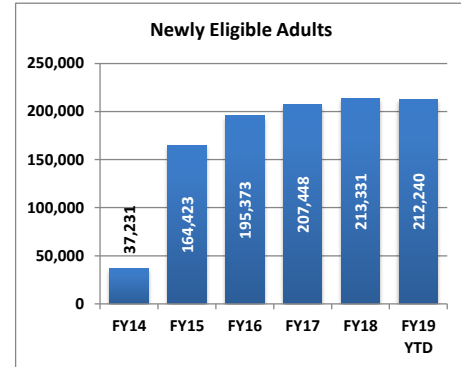
| Month | Newly Eligible Adults | Leg. Approved | Gov. Recommended | May 2019 Projection |
|--------|-----------------------|---------------|------------------|---------------------|
| Jul-17 | 211,060 | 214,390 | | |
| Aug-17 | 211,736 | 215,672 | | |
| Sep-17 | 211,428 | 215,691 | | |
| Oct-17 | 211,805 | 216,251 | | |
| Nov-17 | 212,028 | 216,105 | | |
| Dec-17 | 213,384 | 215,596 | | |
| Jan-18 | 215,236 | 215,576 | | |
| Feb-18 | 214,570 | 214,810 | | |
| Mar-18 | 214,266 | 215,051 | | |
| Apr-18 | 214,869 | 215,296 | | |
| May-18 | 215,101 | 216,011 | | |
| Jun-18 | 214,489 | 216,215 | | |
| Jul-18 | 214,714 | 216,778 | | |
| Aug-18 | 214,260 | 218,009 | | |
| Sep-18 | 213,869 | 217,673 | | |
| Oct-18 | 214,196 | 218,687 | 214,196 | |
| Nov-18 | 212,434 | 218,810 | 214,163 | |
| Dec-18 | 211,278 | 218,802 | 213,434 | |
| Jan-19 | 211,069 | 218,980 | 212,821 | |
| Feb-19 | 210,227 | 218,499 | 211,792 | |
| Mar-19 | 209,747 | 218,614 | 211,841 | |
| Apr-19 | 210,608 | 219,372 | 212,515 | 210,608 |
| May-19 | | 220,076 | 213,271 | 210,700 |
| Jun-19 | | 219,885 | 213,207 | 210,019 |

FY20 & FY21 Biennium

| Month | Gov. Recommended | May 2019 Projection |
|--------|------------------|---------------------|
| Jul-19 | 213,548 | 209,869 |
| Aug-19 | 214,844 | 210,709 |
| Sep-19 | 214,473 | 210,017 |
| Oct-19 | 215,186 | 210,507 |
| Nov-19 | 215,116 | 210,050 |
| Dec-19 | 214,953 | 209,299 |
| Jan-20 | 214,949 | 208,725 |
| Feb-20 | 214,489 | 207,744 |
| Mar-20 | 214,770 | 207,613 |
| Apr-20 | 215,462 | 207,836 |
| May-20 | 216,075 | 208,067 |
| Jun-20 | 215,955 | 207,641 |
| Jul-20 | 216,251 | 207,625 |
| Aug-20 | 217,308 | 208,343 |
| Sep-20 | 216,930 | 207,680 |
| Oct-20 | 217,657 | 208,023 |
| Nov-20 | 217,573 | 207,527 |
| Dec-20 | 217,468 | 207,004 |
| Jan-21 | 217,660 | 206,768 |
| Feb-21 | 217,290 | 205,916 |
| Mar-21 | 217,640 | 205,776 |
| Apr-21 | 218,334 | 205,986 |
| May-21 | 218,977 | 206,146 |
| Jun-21 | 218,892 | 205,700 |

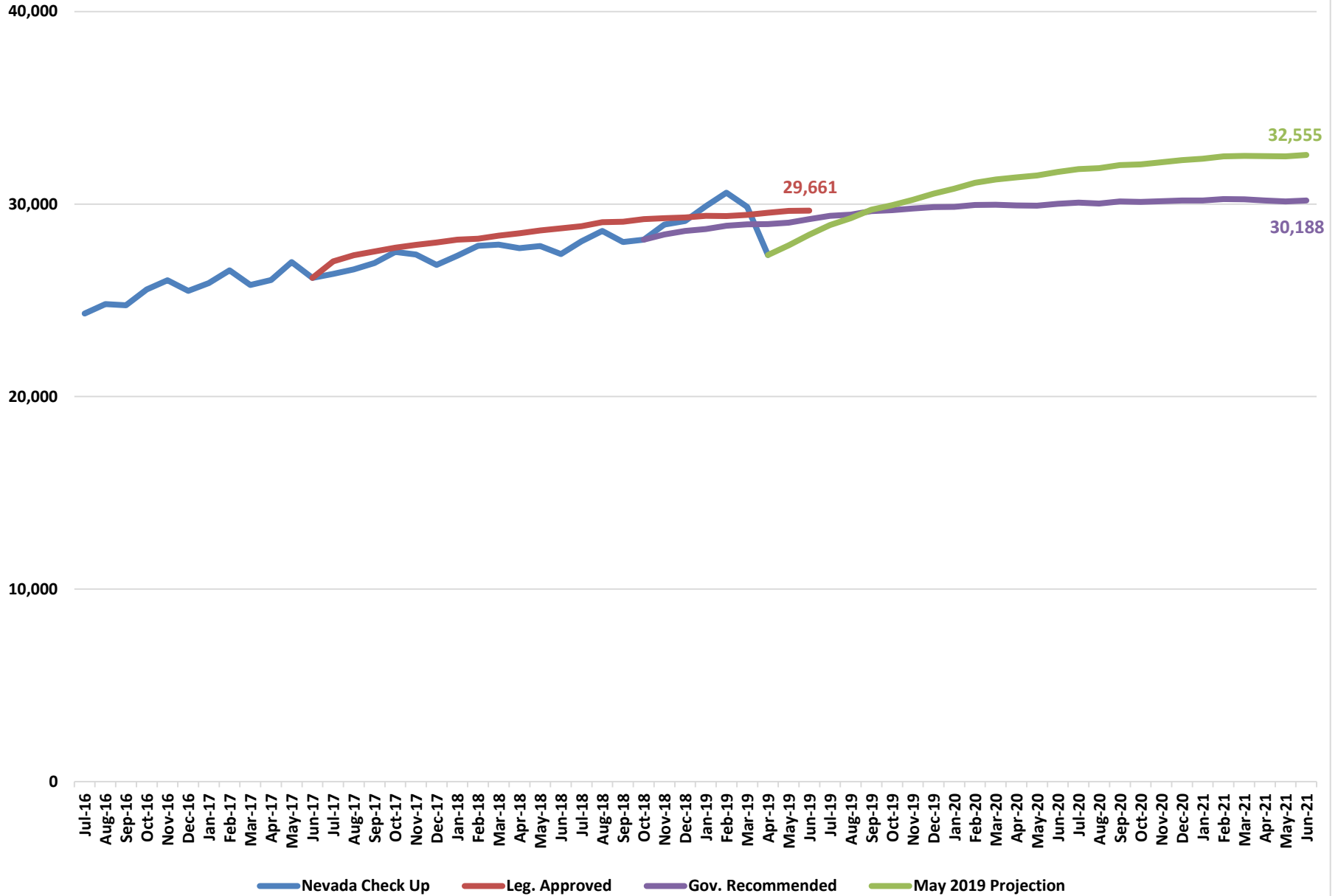
Fiscal Year Averages

| Fiscal Year | Newly Eligible Adults | Percent Change |
|-------------|-----------------------|----------------|
| FY14 | 37,231 | |
| FY15 | 164,423 | 341.6% |
| FY16 | 195,373 | 18.8% |
| FY17 | 207,448 | 6.2% |
| FY18 | 213,331 | 2.8% |
| FY19 YTD | 212,240 | -0.5% |



Note: This caseload includes childless adults age 19-64 between 0%-138% FPL and parents age 19-64 between 23%-138% FPL.

Nevada Check Up



Nevada Check Up

FY16 & FY17 Biennium

| Month | Nevada Check Up |
|--------|-----------------|
| Jul-15 | 20,995 |
| Aug-15 | 21,373 |
| Sep-15 | 21,154 |
| Oct-15 | 22,419 |
| Nov-15 | 22,742 |
| Dec-15 | 22,922 |
| Jan-16 | 22,211 |
| Feb-16 | 23,276 |
| Mar-16 | 22,471 |
| Apr-16 | 23,837 |
| May-16 | 24,431 |
| Jun-16 | 23,728 |
| Jul-16 | 24,315 |
| Aug-16 | 24,801 |
| Sep-16 | 24,741 |
| Oct-16 | 25,558 |
| Nov-16 | 26,036 |
| Dec-16 | 25,492 |
| Jan-17 | 25,896 |
| Feb-17 | 26,551 |
| Mar-17 | 25,795 |
| Apr-17 | 26,050 |
| May-17 | 26,989 |
| Jun-17 | 26,165 |

FY18 & FY19 Biennium

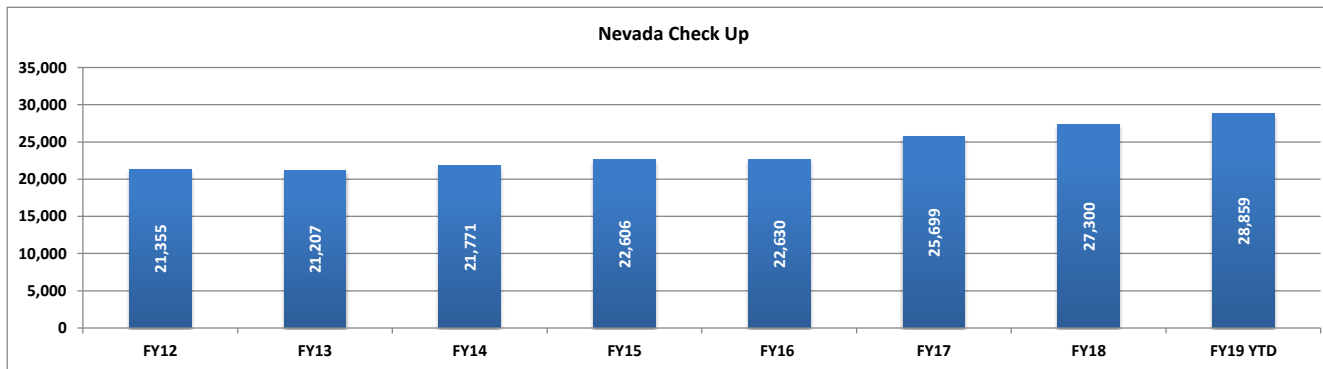
| Month | Nevada Check Up | Leg. Approved | Gov. Recommended | May 2019 Projection |
|--------|-----------------|---------------|------------------|---------------------|
| Jul-17 | 26,369 | 27,018 | | |
| Aug-17 | 26,604 | 27,342 | | |
| Sep-17 | 26,935 | 27,531 | | |
| Oct-17 | 27,515 | 27,739 | | |
| Nov-17 | 27,372 | 27,880 | | |
| Dec-17 | 26,842 | 27,997 | | |
| Jan-18 | 27,314 | 28,146 | | |
| Feb-18 | 27,825 | 28,194 | | |
| Mar-18 | 27,893 | 28,354 | | |
| Apr-18 | 27,713 | 28,476 | | |
| May-18 | 27,813 | 28,625 | | |
| Jun-18 | 27,406 | 28,736 | | |
| Jul-18 | 28,066 | 28,848 | | |
| Aug-18 | 28,608 | 29,054 | | |
| Sep-18 | 28,027 | 29,076 | | |
| Oct-18 | 28,144 | 29,215 | 28,144 | |
| Nov-18 | 28,937 | 29,268 | 28,416 | |
| Dec-18 | 29,122 | 29,306 | 28,607 | |
| Jan-19 | 29,890 | 29,387 | 28,699 | |
| Feb-19 | 30,588 | 29,370 | 28,871 | |
| Mar-19 | 29,854 | 29,431 | 28,940 | |
| Apr-19 | 27,350 | 29,545 | 28,961 | 27,350 |
| May-19 | | 29,648 | 29,030 | 27,853 |
| Jun-19 | | 29,661 | 29,219 | 28,409 |

FY20 & FY21 Biennium

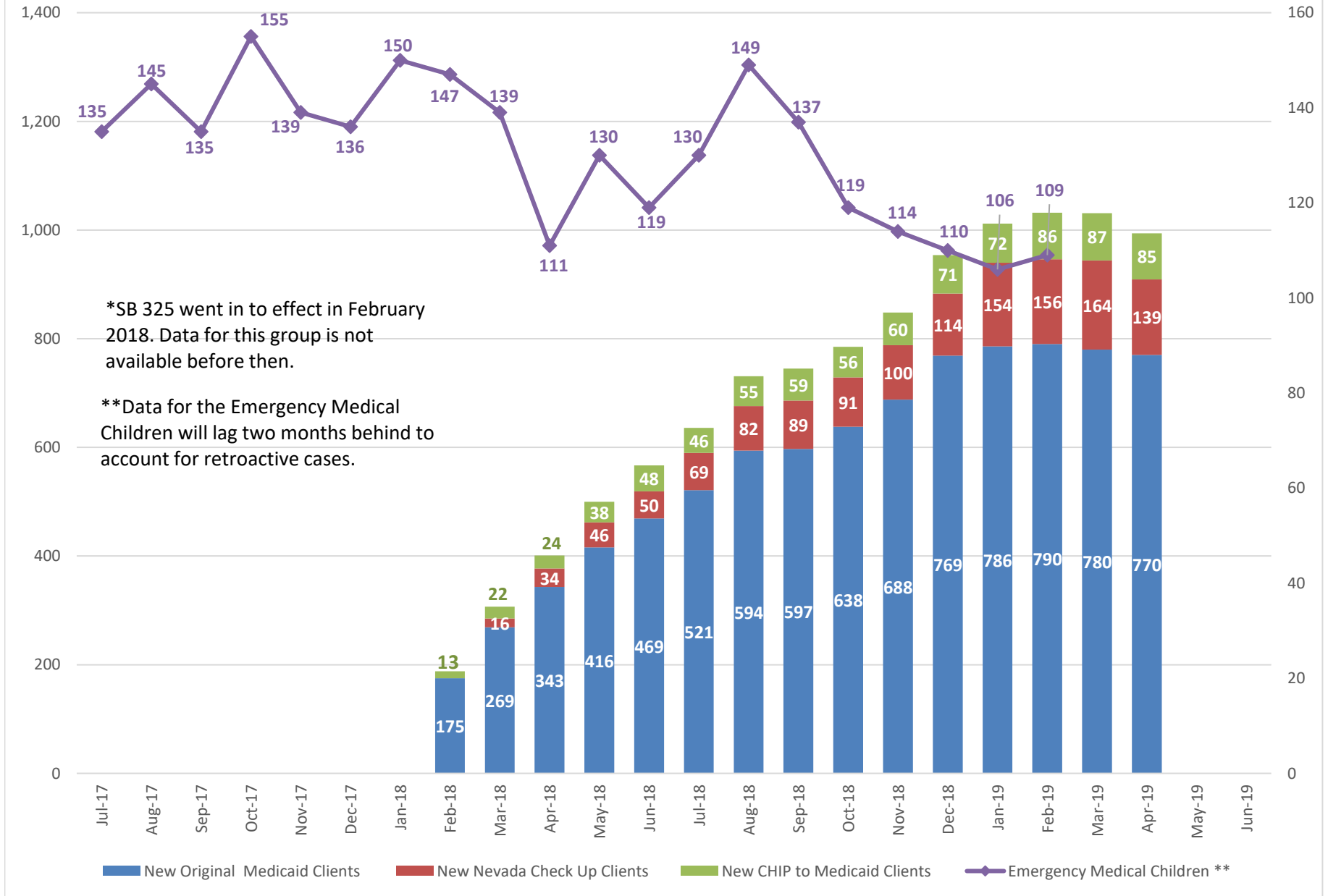
| Month | Gov. Recommended | May 2019 Projection |
|--------|------------------|---------------------|
| Jul-19 | 29,390 | 28,907 |
| Aug-19 | 29,450 | 29,266 |
| Sep-19 | 29,635 | 29,707 |
| Oct-19 | 29,676 | 29,941 |
| Nov-19 | 29,764 | 30,220 |
| Dec-19 | 29,835 | 30,537 |
| Jan-20 | 29,854 | 30,793 |
| Feb-20 | 29,950 | 31,101 |
| Mar-20 | 29,965 | 31,277 |
| Apr-20 | 29,928 | 31,379 |
| May-20 | 29,917 | 31,484 |
| Jun-20 | 30,012 | 31,670 |
| Jul-20 | 30,070 | 31,808 |
| Aug-20 | 30,022 | 31,857 |
| Sep-20 | 30,139 | 32,027 |
| Oct-20 | 30,114 | 32,063 |
| Nov-20 | 30,145 | 32,164 |
| Dec-20 | 30,189 | 32,284 |
| Jan-21 | 30,182 | 32,352 |
| Feb-21 | 30,259 | 32,478 |
| Mar-21 | 30,242 | 32,506 |
| Apr-21 | 30,187 | 32,484 |
| May-21 | 30,139 | 32,473 |
| Jun-21 | 30,188 | 32,555 |

Fiscal Year Averages

| Fiscal Year | Nevada Check Up | Percent Change |
|-------------|-----------------|----------------|
| FY12 | 21,355 | |
| FY13 | 21,207 | -0.7% |
| FY14 | 21,771 | 2.7% |
| FY15 | 22,606 | 3.8% |
| FY16 | 22,630 | 0.1% |
| FY17 | 25,699 | 13.6% |
| FY18 | 27,300 | 6.2% |
| FY19 YTD | 28,859 | 5.7% |



New Clients Added Under SB 325*



New Clients Added Under SB 325

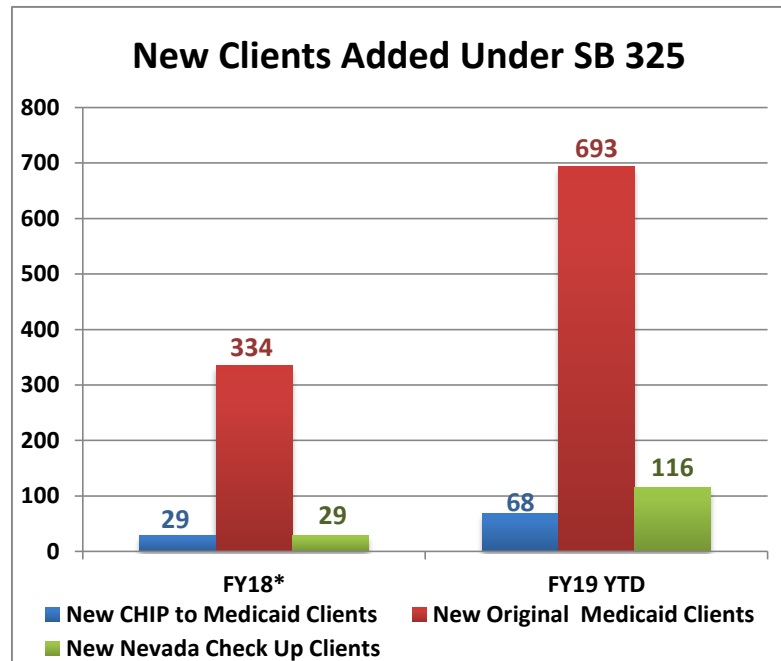
| Month | New CHIP to Medicaid Clients | New Original Medicaid Clients | New Nevada Check Up Clients | Total New Clients |
|--------|------------------------------|-------------------------------|-----------------------------|-------------------|
| Feb-18 | 13 | 175 | 0 | 188 |
| Mar-18 | 22 | 269 | 16 | 307 |
| Apr-18 | 24 | 343 | 34 | 401 |
| May-18 | 38 | 416 | 46 | 500 |
| Jun-18 | 48 | 469 | 50 | 567 |
| Jul-18 | 46 | 521 | 69 | 636 |
| Aug-18 | 55 | 594 | 82 | 731 |
| Sep-18 | 59 | 597 | 89 | 745 |
| Oct-18 | 56 | 638 | 91 | 785 |
| Nov-18 | 60 | 688 | 100 | 848 |
| Dec-18 | 71 | 769 | 114 | 954 |
| Jan-19 | 72 | 786 | 154 | 1012 |
| Feb-19 | 86 | 790 | 156 | 1032 |
| Mar-19 | 87 | 780 | 164 | 1031 |
| Apr-19 | 85 | 770 | 139 | 994 |
| May-19 | | | | |
| Jun-19 | | | | |

Note: Numbers are updated monthly to reflect the caseload with retroactive clients

Fiscal Year Averages

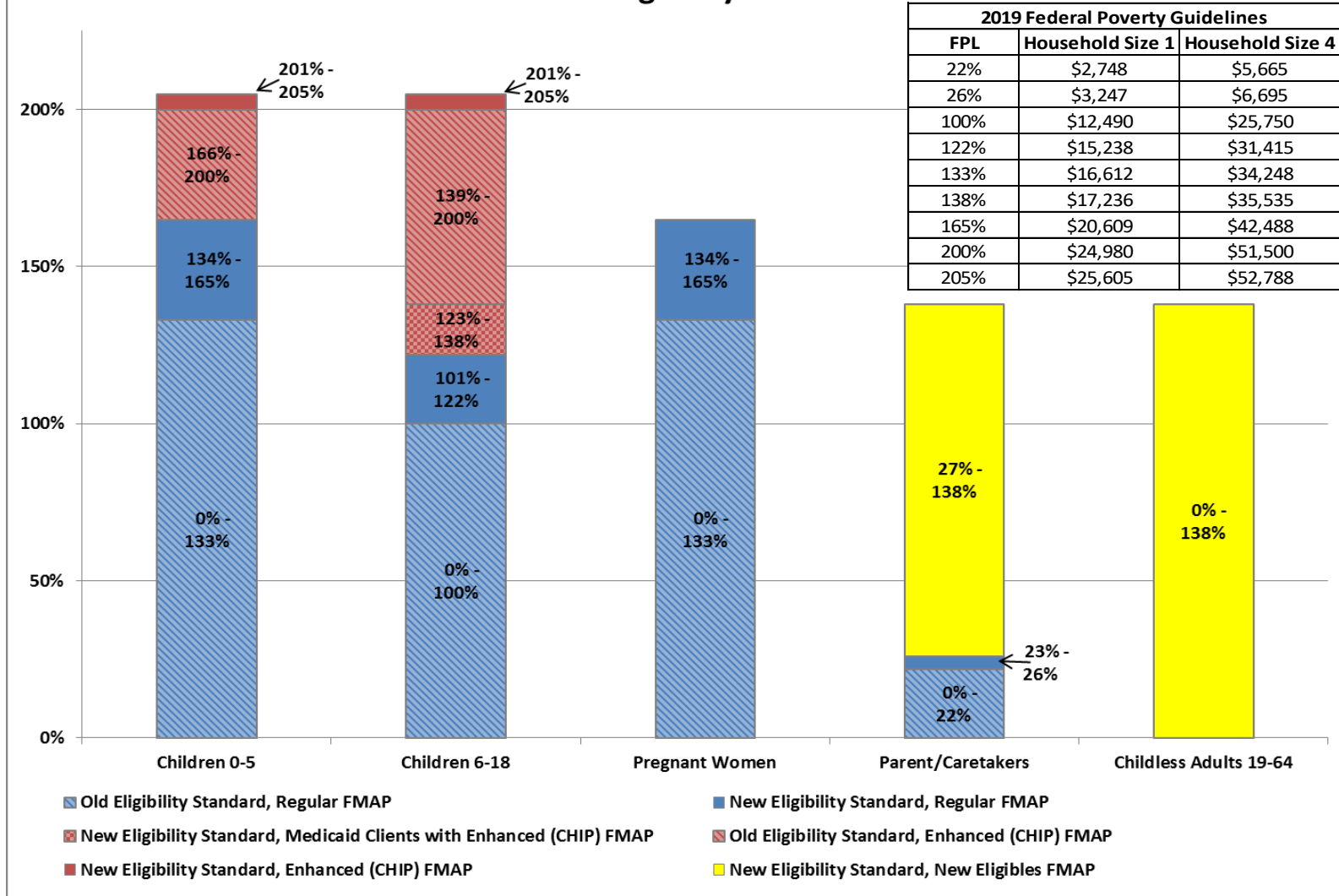
| Fiscal Year | New CHIP to Medicaid Clients | New Original Medicaid Clients | New Nevada Check Up Clients | Total New Clients |
|-------------|------------------------------|-------------------------------|-----------------------------|-------------------|
| FY18* | 29 | 334 | 29 | 393 |
| FY19 YTD | 68 | 693 | 116 | 877 |

* FY18 only includes five months: February through June 2018



SB 325 allowed alien children who are younger than 18 to enroll in Medicaid programs or Nevada Check Up without the 5-year waitout period.

Medicaid Eligibility and FMAP



Federal Medical Assistance Percentages (FMAP)

| State Fiscal Year | FMAP | Enhanced (CHIP) FMAP | ACA Enhanced (CHIP) FMAP | New Eligibles FMAP |
|-------------------|--------|----------------------|--------------------------|--------------------|
| FY03 | 51.79% | 66.25% | | |
| | 52.53% | 66.77% | | |
| FY04 | 54.30% | 68.01% | | |
| | 55.34% | 68.74% | | |
| FY05 | 55.66% | 68.96% | | |
| FY06 | 55.05% | 68.53% | | |
| FY07 | 54.14% | 67.90% | | |
| FY08 | 52.96% | 67.07% | | |
| FY09 | 50.66% | 65.46% | | |
| | 61.11% | 72.78% | | |
| FY10 | 50.12% | 65.08% | | |
| | 63.93% | 74.75% | | |
| FY11 | 51.25% | 65.87% | | |
| | 62.05% | 70.44% | | |
| FY12 | 55.05% | 68.54% | | |
| FY13 | 58.86% | 71.20% | | |
| FY14 | 62.26% | 73.58% | | 100.00% |
| FY15 | 64.04% | 74.83% | | 100.00% |
| FY16 | 64.79% | 75.35% | 92.60% | 100.00% |
| FY17 | 64.74% | 75.32% | 98.32% | 97.50% |
| FY18 | 65.48% | 75.84% | 98.84% | 94.50% |
| FY19 | 65.09% | 75.57% | 98.57% | 93.50% |
| FY20 | 64.17% | 74.92% | 89.29% | 91.50% |
| FY21 | 64.63% | 75.24% | 78.11% | 90.00% |
| FY22 | 65.24% | 75.66% | | 90.00% |
| FY23 | 65.99% | 76.19% | | 90.00% |

Note: The green cells reflect a 2.95% increase for the period April 2003 through June 2004. The blue cells reflect the ARRA stimulus adjusted FMAP for October 2008 through December 2010. The FMAP values for FY21 through FY23 are projections. The ACA Enhanced (CHIP) FMAP ends in September 2020.